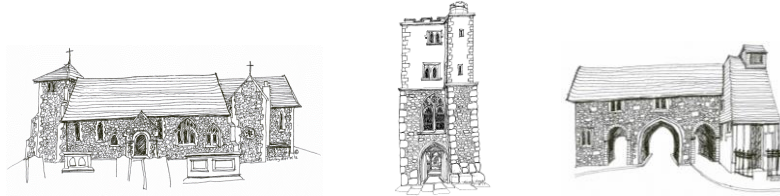




Parish Magazine of  
St Bartholomew, Hyde  
and St Lawrence  
with St Swithun-upon-Kingsgate,  
Winchester



**APRIL 2024**



## The Three Saints Benefice of St Bartholomew and St Lawrence with St Swithun-upon-Kingsgate, Winchester

### ***Welcome***

As the Church of England for Hyde, Abbotts Barton and Winchester city centre, our three historic churches together form two inclusive parishes and one friendly benefice family, where you will be sure of a warm welcome.

For all our news and lots of information, from the spiritual to the social, please make sure you are on the mailing list for our weekly newsletter (by email), or see our website [www.threesaints.org.uk](http://www.threesaints.org.uk)

Prayer requests can be sent to the Parish Office, and please let us know of anyone in our parishes who needs our practical help.

May you be blessed with new life and hope through our risen Lord Jesus.

*Revd. Karen*

Rector:	The Revd Karen Kousseff St Bartholomew's House, 1 Abbey Hill Close, Winchester, SO23 7AZ Tel. (01962) 850956, email <a href="mailto:karen@threesaints.org.uk">karen@threesaints.org.uk</a>
Honorary Associate Priest:	The Revd Amanda Goulding
Licensed Lay Minister	Meriel Walton
Children & Families Worker	<i>vacant</i>
Churchwardens	<u>St Bartholomew</u> Malcolm Bruce, tel. 861644, <a href="mailto:malcolm.bruce@gmail.com">malcolm.bruce@gmail.com</a> <u>St Lawrence with St Swithun</u> Beauman Chong, tel. 866488, <a href="mailto:beauman_chong@hotmail.com">beauman_chong@hotmail.com</a> John Stanning, tel. 867995, <a href="mailto:john.stanning@yahoo.co.uk">john.stanning@yahoo.co.uk</a>
Parish Office for the benefice	St Lawrence Parish Office, Colebrook Street, Winchester, SO23 9LH Tel. (01962) 849434, email <a href="mailto:office@threesaints.org.uk">office@threesaints.org.uk</a> Monday afternoons, Wednesdays and Fridays
Website:	<a href="http://www.threesaints.org.uk">www.threesaints.org.uk</a> Facebook: click on the <b>f</b> icon on the website

More contact details can be found in the directory at the back of this magazine.

***NOTE: political or theological views in articles contributed from external sources do not necessarily represent the views or policy of the editors, PCCs or Ministry Team.***

Dear Friends,

Alleluia, he is risen!  
He is risen indeed, Alleluia!

Naturally I am writing this letter in advance of publication whilst we are still in Lent. However, it should be available in the Churches on Easter Day, which this year is 31<sup>st</sup> March. So I have the pleasure of anticipating the Easter greeting and may I take this opportunity to wish you all a very Happy Easter.



The two weeks before Easter are known as the season of Passiontide in the Church of England. According to St John, six days before the feast of the Passover, when the Jews celebrated the ancient Exodus of the Hebrews from Egypt, Jesus arrived in Bethany. Bethany, two miles from Jerusalem, was where Lazarus, whom Jesus had raised from the dead, and his sisters Martha and Mary, lived. During dinner Mary anointed Jesus with expensive perfume. Everyone was shocked but Jesus condoned her action - he knew he was about to die. "Leave her alone ... it was intended that she should save this perfume for the day of my burial. You will always have the poor among you, but you will not always have me." The following day, which we call Palm Sunday, Jesus entered Jerusalem on a donkey, fully aware that he was going to his death. Jerusalem was seething with people who had come to celebrate the Passover Feast and might already have encountered Jesus in Galilee. They greeted Jesus with enthusiasm, spreading palm branches in his path. The Jewish leaders resolved that he was too influential and that he had to die.

It is customary in many Churches and Cathedrals for the Passion story according to the gospels to be read or performed and there are numerous concert performances of the St John Passion and the St Matthew Passion by J.S. Bach. This year is the tercentenary of the first performance of the St John Passion, in Leipzig on 7<sup>th</sup> April 1724. The librettist is unknown.

Palm Sunday was celebrated in this Benefice last week and there was a very successful lunch party in the Parish Room with donations for Christian Aid. Further contributions can be made if you wish.

Yours in Christ, Meriel.

## Our Services

We welcome you to the weekly services in each of our three churches.

There will not be an offertory collection during the service but donations for each church are greatly appreciated and can be left in the plate on your way in, or made online to either parish via our website. Thank you.

**Access:** We are unable to provide disabled access to the church of St Swithun, but there is level access to St Bartholomew (from Hyde Church Path) and to St Lawrence.

### Online services from St Lawrence and St Swithun's

Our Sunday services at St Lawrence and St Swithun's are routinely live-streamed. You can join us on Zoom using meeting number 828 4610 0818 and passcode 3Saints20. We are pleased to welcome you online.

We currently live-stream very simply using a mobile phone. Please bear with us if there are any temporary problems with our online broadcast and forgive us if there are any significant technical issues. We strive to ensure that all of our online events are held safely and without technical hitches but it is impossible to eliminate these completely and so we apologise in advance should there be any disruptions.

### St Lawrence Church Closed 8<sup>th</sup> - 20<sup>th</sup> April

St Lawrence Church will be closed from Monday 8<sup>th</sup> to Saturday 20<sup>th</sup> April, except for the Sunday morning service on 14<sup>th</sup> April and Space in the City on 17<sup>th</sup> April. The closure is for the installation of new cameras and sound equipment - which will enable us to "live-stream" services with much better quality - and CCTV, and at the same time to put brighter and more economical LED bulbs in the lights. Much of this work will be at high level using a tower scaffold, which will be wheeled about the church as needed (so the chairs will be cleared), hence we will be unable to keep the church open. For the Sunday service and Space in the City we will 'park' the tower in a corner.

### Regular Services

Our general pattern of worship continues as below, with changes for special occasions.

<b>SUNDAY</b>	<b><i>St Bartholomew</i></b>	<b><i>St Lawrence</i></b>	<b><i>St Swithun</i></b>
1 <sup>st</sup>	10am <i>All Together</i> service	10am Holy Communion	6pm Evensong (BCP)
2 <sup>nd</sup>	10am Holy Communion	10am Morning Worship	6pm Holy Communion
3 <sup>rd</sup>	10am Morning Worship	10am Holy Communion	6pm Evensong (BCP)
4 <sup>th</sup>	10am Holy Communion	10am Morning Worship	6pm Evensong (BCP)
5 <sup>th</sup>	10am Benefice Communion alternately at St Bartholomew & St Lawrence		6pm Evening Prayer (Common Worship)

#### Midweek Holy Communion

1<sup>st</sup> Wednesdays, 10.30am at St Lawrence (*NB not in April*)  
3<sup>rd</sup> Wednesdays, 11.30am at St Bartholomew

## Church Family News

### Baptisms

There were two baptisms at St Bartholomew's Church on 3<sup>rd</sup> March: Dottie Purvis was baptised during the All Together Service, and Ned Giblin was baptised later that day.



*Dottie Purvis and parents*



*Ned Giblin and parents*

### Deaths

General Sir Antony Walker KCB died on 13<sup>th</sup> October, aged 89, and his funeral was held at St Bartholomew's Church on 9<sup>th</sup> November. A service of thanksgiving was held at the Royal Memorial Chapel at Sandhurst on 22<sup>nd</sup> March, conducted by Revd Canon Dr Roland Riem. His Majesty The King was represented by General Sir Christopher Deverell KCB.

A service of thanksgiving for Lesley Williams, who died on 14<sup>th</sup> January at Sheffield, was held at St Bartholomew's Church on 8<sup>th</sup> March. Her ashes will be interred on Friday 5<sup>th</sup> April at 1pm at St Bartholomew.

### For your Prayers

Please pray for [Malcolm Bruce](#) training for ordination and [Nick Goulding](#) working for the Bishop's Permission to Preach.

Please pray for the [sick and housebound](#) and all who care for them; and for the departed and all who mourn.

Please pray for our [Children & Families ministry](#), including our links with St Bede School and our Little Wrigglers toddler group.

**Care Homes:** Please pray for the staff and residents of Abbots Barton Care Home, where Revd Karen continues to take monthly communion services.

### Benefice News

**St Bartholomew's:** The PCC is making good progress with plans to have a new heating system installed over the summer, following the recent failure of the oil tank. In the meantime it may still be cold in church, but blankets are available, and please come warmly dressed!

**Music at Eucharistic Services:** it is fitting that in the joyful Easter season, from 7<sup>th</sup> April onwards, we will resume our pre-Covid practice of singing the eucharistic responses. All three churches will use the settings written specially for St Swithun-upon-Kingsgate, by Simon McEnery, and a short Taizé Gloria. The music will be made available for those who can follow it, but we will also have some short practices so that everyone can join in.

**The Revd Theresa Ricketts** was licensed on 5<sup>th</sup> March as the Bishop of Winchester's Chaplain.

**St Bartholomew's Midweek Communion:** the monthly midweek Communion service is on the third Wednesday of the month at 11.30am, **this month Wednesday 17<sup>th</sup> April.**

**St Lawrence Midweek BCP Communion:** Please note that there will be no Midweek Communion at St Lawrence in April! Normal service arrangements (on the first Wednesday of the month) will resume on **Wednesday 1<sup>st</sup> May** at 10.30am. Many thanks to Revd Amanda for enabling this.

**The Julian Group** meets on Zoom **every Tuesday** at 2.30pm for half an hour, reflecting on the same reading, and helping us to keep in touch this way. If you would like to know the reflection please contact Sue Tisdall on 851621.

**The Benefice Prayer Group** meets on the **third Monday of each month, so 15<sup>th</sup> April.** New members warmly welcome. If interested please contact Sue Tisdall 851621 for more information.

**The West View & Neighbours Prayer Group** prays for the residents of West View and Alleyne House and for their neighbours, **on the 4<sup>th</sup> Wednesday of the month, 24<sup>th</sup> April.** If anyone would like to know the prayer topics, please contact Alys: alys\_blakeway@yahoo.co.uk or 868581.

**St Bartholomew Clean Up:** Please join us to sweep, vacuum and dust the Church on **Monday 8<sup>th</sup> April** at 10am.

**St Bartholomew's is open to visitors** every Saturday 10am - 1pm. Opening the church on Saturdays is proving very successful but more volunteer welcomers are needed to join the team. Please contact Jeannette Archdeacon (864556) if you can help welcome people (with another person).

**Men's Breakfast:** The next meeting is on **Saturday 13<sup>th</sup> April** at The Old Vine at 8.30am. See details on page 7.

#### **DATES FOR YOUR DIARY:**

Sunday 14 <sup>th</sup> April	APCM for St Bartholomew parish after 10am service
Weds 17 <sup>th</sup> April	Space in the City at St Lawrence, 12.30pm
Thursday 18 <sup>th</sup> April	Art @ St Bart's, 7pm
Sunday 21 <sup>st</sup> April	APCM for St Lawrence with St Swithun Parish after 10am service
Weds 1 <sup>st</sup> , 8 <sup>th</sup> , 15 <sup>th</sup> , 22 <sup>nd</sup> May	Space in the City at St Lawrence, 12.30pm
Thursday 9 <sup>th</sup> May	Ascension Day: Holy Communion at St Swithun's, 7pm
12 <sup>th</sup> - 18 <sup>th</sup> May	Christian Aid Week
Thursday 16 <sup>th</sup> May	Art @ St Bart's, 7pm
Thursday 13 <sup>th</sup> June	Art @ St Bart's, 7pm

*Details of some of these events are in the following pages*



You are invited to join us at the monthly  
**St Lawrence Coffee Morning**  
 The next Coffee Morning is on  
**Friday 5<sup>th</sup> April 2024**  
**10-11.30am**



### Hyde Parish Coffee Mornings 2024

Coffee Mornings are now held in the Church on the 3<sup>rd</sup> Tuesday of each month, so the next one will be on Tuesday 16<sup>th</sup> April. We meet from 10.30-11.30 am for coffee or tea, biscuits and our usual raffle, as well as companionship.

In 2023 we raised just over £600 for 'The Giving for Living' Appeal and are grateful for the support we receive from the small band of helpers. However, more help would be welcome as well as more 'friendly faces' - we are open to everyone. As you know, we feel quite deeply about keeping up the social side of our beautiful and precious ancient church, so do join us when you can. You will be very welcome. As most of you know, the church can be nippy, so thermals might be the order of the day!

*Daphne and Denis Marlow*

### Men's Breakfast

Hello Readers, from the scriptwriters of the Men's Breakfast:

We will next meet at 8.30am on **Saturday 13<sup>th</sup> April**. At The Old Vine as usual. Come and join us, whichever of the various genders is your current moniker.\* You will be welcome under any definition and your contribution to whatever we are discussing will be joyful, no doubt. Future dates will be May 11<sup>th</sup> and June 8<sup>th</sup>, then we will be well into the summer, and we will have to decide if we take a summer break. After discussion with our hosts, The Old Vine has allowed us a wider menu choice.

As usual please let Richard Stead know if you will be in attendance. Gender declaration is, as usual, optional. Please email Richard Stead [richard@regchem.com](mailto:richard@regchem.com) or call 07850 596172. Topics for April 13<sup>th</sup> are, at this time, locked securely in the Parish safe.

\* In the March magazine Richard remarked on being asked "What would you do if a female turned up?"

**MAGAZINE COPY:** Copy deadline for the May 2024 issue is **Sunday 14<sup>th</sup> April** - but, as usual, the Editors would prefer to receive material earlier. Please send contributions to the joint Editors:

- Diary and notices to Jill Bath, [jillbath@btinternet.com](mailto:jillbath@btinternet.com)
- Parish news, reports and articles to John Stanning, [john.stanning@yahoo.co.uk](mailto:john.stanning@yahoo.co.uk), or by post to the Parish Office.

**MAGAZINE ADVERTISING:** Please contact the Parish Office.



**St Bart's  
Little Wrigglers**

A friendly group for parents/carers and children  
in St Bartholomew's Church, Hyde

Everyone is welcome

- Every Wednesday in Term time
- 10am - 11:30am
- £1 per child
- Drinks and snacks

For information  
'St Bartholomew, St Lawrence & St Swithun'  
or [www.threesaints.org.uk/families](http://www.threesaints.org.uk/families)



# DEANERY IDEAS FAYRE

Saturday 13th April

2-4 pm

**St Paul's Church, Winchester SO22 5AB**

Parking at Church or in nearby roads

Come and see a display of fresh ideas from many churches in the deanery.  
Ideas which have helped to build up the church and attract newcomers of all ages.

*Cream Teas*

This is open to all churches and all parishioners in the Deanery. Please come along to see what ideas our churches are coming up with. St Bartholomew's Church will be one of the churches represented there, explaining what they are planning for the future.





## SPACE IN THE CITY

### *Spiritual*

*A series of talks on spiritual traditions that have shaped lives and religious practice over the centuries and how they still influence our flourishing today*

*at St Lawrence Church, The Square, Winchester*

*Wednesdays 17 April and 1, 8, 15, 22 May 2024*

*12.30 - 1pm*

*followed by questions*

*Admission free ... Donations are most welcome*

17 <sup>th</sup> April	The Rev'd Michael Jackson: <i>"I'm not religious, but I am spiritual, vicar"</i>
1 <sup>st</sup> May	The Rev'd Richard Carter: <i>St Martin in the Fields - The Nazareth Community</i>
8 <sup>th</sup> May	Brian Draper: <i>Soulful Nature</i>
15 <sup>th</sup> May	The Rev'd Canon Dr Tom Clammer OC: <i>The Spiritual Legacy of St Benedict: an Anglican Cistercian reflects</i>
22 <sup>nd</sup> May	Dr Claire Gilbert: <i>Julian of Norwich: a spiritual response to the ecological crisis</i>

-----

## Electoral Roll Revision

for St Lawrence with St Swithun Parish

Please make sure that you're on your parish's roll so that you can vote at the annual meeting!

The qualification for being on the roll is that you're baptised and *either* that you're resident in the parish *or* that you've attended church regularly for the past six months (or would have done so if you could). If you're not sure which parish you live in, go online to [www.achurchnearyou.com](http://www.achurchnearyou.com) and enter your address or postcode.

There is a notice in each church showing the formal revision period; the deadline for St Lawrence and St Swithun Parish is 6<sup>th</sup> April 2024. After the formal revision period the names of those on the roll (but no other information) will be posted on church notice-boards for two weeks.

If you're not sure whether you're on your parish's roll and want to be, or if you're on the roll and have moved house in the past year, or if you have any questions about the electoral roll, please see the electoral roll officer, John Stanning. If you don't find him in church, you can contact him via the Parish Office.

(St Bartholomew's electoral roll revision period ended on 30<sup>th</sup> March.)

### Please come to your parish's Annual Meeting

Each parish has two annual meetings every year: a brief **Annual Meeting of Parishioners** whose only business is to elect the churchwardens - anyone resident in the parish, as well as anyone on the electoral roll, can vote. That meeting is followed by the **Annual Parochial Church Meeting (APCM)** when the Rector reports to the parish and we elect PCC members. Anyone may attend the APCM but only those on the electoral roll may vote.

**Sunday 14<sup>th</sup> April**    St Bartholomew Annual Meetings  
in St Bartholomew's Church after the morning service (about 11.15am)

**Sunday 21<sup>st</sup> April**    St Lawrence with St Swithun Annual Meetings  
in St Lawrence Church after the morning service (about 11.15am)

**Elections:** Nomination forms will be available in Church in March for the election of churchwardens and PCC members. If you are interested in being nominated, please talk to your churchwardens to find out more. Please return completed forms to the Parish Office.

-----

## Recycle your old Christmas cards!

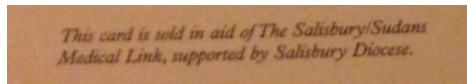
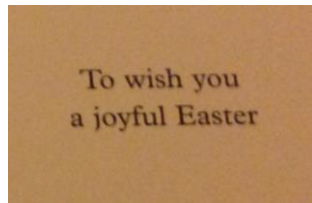
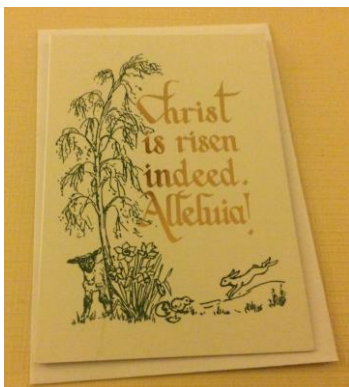


The organisers for the Salisbury/Sudan Medical Link are extremely grateful to our Benefice for the “excellent cards” we have gifted to the charity for reuse. Over the last financial year £4,200 was raised from the sale of the cards. Since Katherine and David Callard started running the scheme, to recycle cards some ten years or so ago, over £15,000 has been raised to help our sisters and brothers in both Sudans.

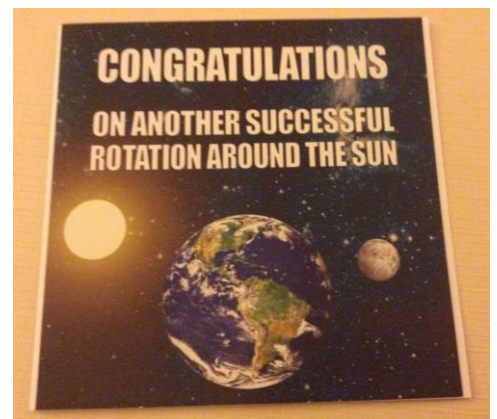
The Sudan Medical Fund was founded by Bishop and Mrs Baker in about 1983. The fund is administered by doctors (and others) in England and by doctors, nurses and paramedics in Sudan. When need is identified and items bought, no money is paid until it is confirmed that the necessary items have reached their destination.

Both Christmas cards and birthday cards may be brought to St Lawrence Church and given to Rodney Targett for handing over to be recycled as new cards.

*Rodney Targett*



An example of an Easter card (front and inside)



A re-used birthday card

## Easter Cross at St Swithun's

A bare wooden cross was hung outside St Swithun's Church for Holy Week as usual. By the time you read this, it will have been decorated with flowers for Easter Day.

But what's that little object below the cross?



Donor unknown!

# Art @ St Bart's

## 2024 SPRING LECTURE SERIES

18th April - Simon Smith  
Master Carver

16th May - Helen Whittaker  
Stained Glass

13th June - Prue Cooper  
Potter

Refreshments will be available  
after the lecture  
for a donation.  
All proceeds will go to the  
St Bart's Giving for Living Appeal

St Bartholomew's Church, Hyde.  
Doors open 6.30pm.  
Lecture starts at 7.00pm  
followed by Q&A

Tickets and further information  
available via  
[www.threesaints.org.uk/art](http://www.threesaints.org.uk/art)  
£12.00 per lecture  
Book whole series for £32.00



18th April - Simon Smith

### Dust to Dust A Life Working in Stone

Simon has carved for more than forty years working in stone and marble. He will share his trade secrets about favourite projects, including 'A Promise Honoured', the memorial to the troops who passed through Winchester during the First World War. He will talk about how, as a teenager, he began work as an apprentice stone mason and describe the turning point at which he became a sculptor. He will explain why he is determined to keep going until he gets it right.

16th May - Helen Whittaker

### Old Craft, New Art An Artistic Journey in Stained Glass

Stained glass artist Helen Whittaker MA FMGP is Creative Director of Barley Studio in York. Helen's commissioned work is inspired by the client, the brief and the building. Her aim is to engage the viewer through narrative and symbolism, creating energy and movement intertwining contemporary and traditional elements.



13th June - Prue Cooper

### Messages from the Workshop

My work celebrates friendship and the sharing of simple pleasures. Some dishes are inscribed with lettering. These quotations are integral to the design, in the same way that words are essential to a song. My cast of characters comment on life. The warm directness of slipware, the physicality of ceramic, and the simple fact that a large dish for food implies daily life and sociability, all are fundamental parts of the whole.

Book your tickets now at [www.threesaints.org.uk/art](http://www.threesaints.org.uk/art)

## 'The Chosen'

Revd Karen highly recommends this powerful dramatized account of the life of Jesus, told through the perspective of his disciples. It is faithful to the Gospel accounts but fleshes out the characters and events in a very engaging and authentic way. So far three seasons of eight episodes are available, mostly around an hour long: watch online for free at <https://watch.thechosen.tv/> or download 'The Chosen' app.



~~~~~

## Palm Sunday at St Bartholomew's

On Palm Sunday the service at St Bartholomew's began, as usual, outside Hyde Gate (the former gatehouse of Hyde Abbey). The congregation then processed into church.



Photo by Edward Fennell (with incorrect time-stamp!)

## Palm Sunday

After the special morning services at St Bartholomew's and St Lawrence's Churches, parishioners and visitors came together to enjoy a Palm Sunday lunch. Judith and her team produced four delicious soups, along with cheeses and fruit, followed by coffee. We had a wonderful time together! Donations were given towards the parish's contribution to Christian Aid week.



Judith Chong was ably assisted by Diana Chadwick, Clare Kilroy, Louise Kerr, Lizzie Aston, Ros Nell, Lizzie Baron, Tina Reid (champion washer-up), Margaret and Chris Higgins, and Beauman Chong.



*Report and photos by Caroline St Leger-Davey*

## St Bartholomew's Weather Vane

St Bartholomew's weather vane was damaged in a storm last year, but now with the help of a cherry picker, the vane has been taken down for repair. The arrow section, which points into the wind and shows the direction the wind is coming from, had broken off. This piece will be reattached at a forge and the entire weather vane regilded. The tail fin, which catches the wind, is very decorative and bears the initials I C and the date 1791. The weather vane is surmounted by a cross. It was last taken down and restored in the late 1960s.

We will look forward to seeing it glinting in the sun on the tower as it has for more than 230 years.

*Andy Wainwright*







WARNER &  
RICHARDSON  
LLP

WARNER AND RICHARDSON LLP  
ARE INDEPENDENT SOLICITORS  
LOCATED IN THE HISTORIC CITY OF WINCHESTER.

WE HAVE A STRONG, LONG STANDING REPUTATION  
FOR PERSONAL SERVICE  
AND HIGH QUALITY LEGAL ADVICE.

FOR INFORMATION ON HOW WE CAN HELP YOU WITH  
ANY OF THESE MATTERS:-

- WILLS, PROBATE AND ESTATES
- RESIDENTIAL CONVEYANCING
- COMMERCIAL, AGRICULTURAL  
AND BUSINESS CONVEYANCING

PLEASE CONTACT US ON 01962 868366  
Visit our website:- [www.wandr.co.uk](http://www.wandr.co.uk)



## Computer Problems?



- PC, Mac, iPads, Phones
- Systems & Software Setups
- Virus cleaning & Security
- Tune ups & Health Checks
- Broadband, WiFi & Network
- Upgrades & Hardware
- Data Recovery
- Cracked screens replaced

Independent and Impartial Advice  
Home Visits (some evenings available)

10% labour discount over ½ Hour with  
*Parish Magazine*



Laptops, Macs, Phones,  
Data recovery

PC's, Laptops, Home  
setups, Viruses

Colin: 01962 713890  
Mob: 07727 481220

Gerry: 01962 712674  
Mob: 07900 845814

*Qualified engineer*

*Microsoft Certified*

*Please support our advertisers – and don't forget to tell them you saw their ad in this magazine!*

# Anchor

Established. 1983



Plumbing and Heating



Electrical and Air Conditioning



Servicing and Maintenance



Installation and Upgrade



Advice and Quotes



Our dedicated helpdesk is open 24 hours a day, 7 days a week.

Providing a call out service to get your heating working, your hot water running or  
your lights back on again.

**CONTACT US NOW 01962 844 488**

We pride ourselves on exceptional service through our skilled team of experienced engineers, blending  
modern techniques with traditional principles.

[www.anchormaintenance.co.uk](http://www.anchormaintenance.co.uk)





# Gervades

*fine drycleaning and alterations*

7 Upper Brook Street, Winchester  
Tel. 01962 870750

**A**manda  
Attwood  
*BEAUTY*

*A Hidden Gem in the Heart of Winchester*

Established in 1984, Amanda Attwood's is one of the longest running beauty salons in Winchester.

2 Stonemasons Court  
Parchment Street  
SO23 8AT  
Winchester  
**01962 841981**

[www.amanda-attwood.co.uk](http://www.amanda-attwood.co.uk)

Quote PM1 for 10% off your first treatment

- ❖ Facials
- ❖ Waxing
- ❖ Tinting
- ❖ Manicure
- ❖ Pedicures
- ❖ Massage
- ❖ Ear Piercing
- ❖ Eyelash Extensions
- ❖ Gel Polish
- ❖ Electrolysis
- ❖ Non-Surgical Face Lift
- ❖ Microdermabrasion



**dermalogica JESSICA®** **GUINOT**  
INSTITUT • PARIS

*Please support our advertisers - and don't forget to tell them you saw their ad in this magazine!*

**GODWINS**  
SOLICITORS LLP

## Trust in Godwins to deliver

Based in the heart of historic Winchester, we've been advising our private and business Clients with trusted legal expertise for 200 years.

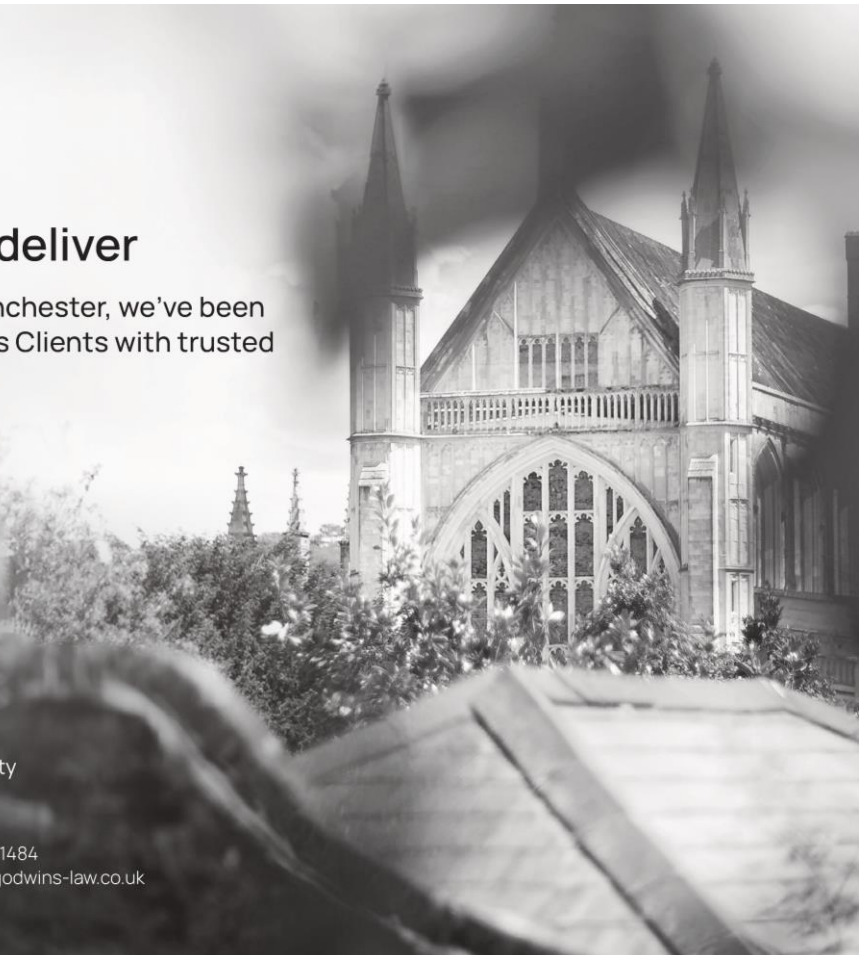
Discover more at [www.godwins-law.co.uk](http://www.godwins-law.co.uk)

**For you**  
Wills / Probate / Trusts / Property

**For your business**  
Landlord & Tenant / Farms & Estates / Property

Godwins Solicitors LLP  
12 St Thomas Street, Winchester,  
Hampshire SO23 9HF

Tel: 01962 841484  
Email: [info@godwins-law.co.uk](mailto:info@godwins-law.co.uk)



## Songs, Prayers, Hymns, Poems, and Verses

We all have our own special prayers and Hymns. To me they can be very much mixed around, being used in place of one another as suits our situation. At the right time a hymn can serve us as well as can a prayer. There are many songs, old or new that also can be introduced and used as a hymn. The first time this struck a chord with me was way back when we were glued to BBC1 (on a Sunday evening) to watch the latest episode of *Howard's Way*. Thanks to Mr Google, it was first shown in September 1985. It had, for me anyway, a gorgeous tune. Later some words were added and it was released successfully as a single for some female singer of the day. I cannot recall who she was, but the words were "Always there". For me it was good enough to be a hymn, maybe because it came straight after Songs of Praise . Those words "Always there" explain why Jesus sits on my shoulder so that he is "always there" when I need him.

Anyway, that is how I arrived at the subject I want to introduce to you all as running stories or articles for the next few months in our Benefice Magazine. "Favourite Hymns" is too similar to what other magazines might run and could take up too much space in the magazine if you all sent in your favourites. Our magazine is quite its own high performer among the usual run of the mill offerings in other Parishes, so my humble suggestion had to have a different stance. Maybe just a few words, as in *Howard's Way* theme song. But that is too few. A hymn is too long. I finally realised that I have three favourite verses among the many thousands I have sung over the years.

The first came from my school days. I have never heard it sung in a Church, but it was a favourite at Morning School assembly. Again, courtesy of Mr Google, here is the verse and afterwards some comment about the time when I was singing it.

When a Knight won his spurs in the stories of old  
He was Gentle and Brave, he was gallant and bold  
With a shield on his arm, and a sword in his hand  
For God and for England, he rode through the land

One of the all-time classic assembly hymns, this was actually a really long-winded way of making a fairly simple point: that while we're not medieval knights, we still take part in some sort of 'fight' against the bad things in our world. There's no real religious content until the third verse, which makes sense of the fantasy lyrics of the first two, and which, somewhat hilariously on reflection, my school used to skip. Scores points for being the only hymn ever to include the word "ogre".

Please send me your contribution to [richard@regchem.com](mailto:richard@regchem.com). Please give me some ideas for your favourite verses and some words supporting and explaining your choice. Hopefully the Editor will allow us some space in the following editions.

My other two favourites will be in future editions ...

*Richard Stead*

## St Lawrence Parish Room

### For Hire

*Need a room for a club, society or lecture?*

St Lawrence Parish Room, in Colebrook Street, offers very competitive prices, and rental includes use of a well-stocked kitchen, toilets, chairs & tables, and a small car park.

For further information ring 01962 849434, or email [office@threesaints.org.uk](mailto:office@threesaints.org.uk)



-----

### Benefice Biros



with stylus for tapping smartphones or tablets

(black ink)

Our biros are engraved with

*Three Saints Benefice  
Winchester*

in four colours — ONLY £3 EACH

from the Parish Office: tel. 849434 or [office@threesaints.org.uk](mailto:office@threesaints.org.uk)

-----

### Sewing machines / laptops / iPads / iPhones for Ukrainian families

Do you have a sewing machine, a working laptop (with Window 10 and MS Office) or an iPad (any age) or a working iPhone to give to Ukrainian families in Winchester? Please contact Beaman if you can help: [beaman\\_chong@hotmail.com](mailto:beaman_chong@hotmail.com) or 01962 866488.

-----

### Cathedral visitor passes

Winchester Cathedral provides a few visitor passes to each local parish. They are available for parishioners to borrow for free entry to the Cathedral. St Bartholomew parish's passes are kept in the vestry; to borrow St Lawrence with St Swithun parish's passes, please contact Sara at the Parish Office.

If you live in Winchester, do consider supporting our Cathedral by joining the Friends. For £25 a year (single membership) you get unlimited free access to the Cathedral as well as other benefits. See [www.winchester-cathedral.org.uk/support-us/friends](http://www.winchester-cathedral.org.uk/support-us/friends) or ring the Friends' office on 01962 857244.

-----

## Winton WI

Join our friendly group of ladies for talks on topics including local history, horticulture, cookery and literature. Social events are also organised.

St Lawrence Parish Room on 2<sup>nd</sup> Monday of every month, 2-4pm. Refreshments available.  
Please contact: Sheila Powell - [sgpowell@hotmail.co.uk](mailto:sgpowell@hotmail.co.uk)

---

### Driving Miss Daisy

Driving Miss Daisy is a Companion Driver service based in central Winchester. Kate Hampton and her team have Wheelchair Accessible vehicles and can accompany you to your appointments, arrange outings, help with shopping and provide a companion service. All companions are Dementia Friends, First Aid trained, and have enhanced DBS. Contact Kate on 0333 014 6211 or email: [winchester@drivingmissdaisy.co.uk](mailto:winchester@drivingmissdaisy.co.uk)  
Website: [www.drivingmissdaisy.co.uk/winchester](http://www.drivingmissdaisy.co.uk/winchester)



## HYDE WI



Monthly meetings for women.

Other activities include:

Book Club, Supper Club, Walking Group, Allotmenters & Craft Group.

Local community involvement/support + National & County WI events

**4<sup>th</sup> Thursday of the month, 7.30pm, Baptist Church Hall**



@hyde\_wi



@hydewi.winchester



@hydewi



hydewi.winchester@gmail.com [www.hydewi.wordpress.com](http://www.hydewi.wordpress.com)

**PLEASE NOTE NEW TIME AND VENUE!**



## Winchester Books Festival

Friday 19<sup>th</sup> - Sunday 21<sup>st</sup> April 2024

This is the launch of an exciting new books festival in Winchester with well known speakers. Please see the website for details of all the events:

[www.winchesterbooksfestival.com](http://www.winchesterbooksfestival.com)

The talks are at various venues including the University of Winchester, Winchester College, The Theatre Royal, P&G Wells Bookshop amongst others.



# WINCHESTER CATHEDRAL

## Lunchtime Concerts at Winchester Cathedral

Tuesdays at 1.15pm - 1.50pm

Brighten up your lunchtime with musical performances from local musicians, and pupils of schools and colleges from around the county.

The 2024 Lunchtime Concert Series takes place at the Cathedral, in the Lady Chapel, from **1.15pm - 1.50pm**.

General admission fees apply. Seats for the lunchtime concerts are limited and are allocated on a first come, first served basis.



### Lunchtime Concerts Programme

- 2<sup>nd</sup> April** Maria Willsher *voice* Nick Salwey *piano* - songs by Schubert, Fauré, Vaughan Williams & Strauss
- 9<sup>th</sup> April** Eleanor Holmes *violin* Nick Salwey *piano* - Bach solo Sonata in G minor & Beethoven Spring Sonata
- 16<sup>th</sup> April** Alfred Fardell *piano* - Schubert Sonata in A major D959
- 23<sup>rd</sup> April** James Burke *clarinet* Nick Salwey *piano* - Weber Concertino & Brahms Sonata in E flat op. 120 no. 2
- 30<sup>th</sup> April** Toshi Ogata *voice* Jack Redman *piano* - Songs by Fauré & Finzi, arias by Donizetti, Verdi & Mascagni
- 14<sup>th</sup> May** Claire Rutter *voice* Nick Salwey *piano* - Strauss' Four Last Songs & songs by Duparc
- 28<sup>th</sup> May** Naoe Foley *piano* - Schubert Sonata in A major D959
- 4<sup>th</sup> June** Théa-Rose Lester Mumford & Erlend Vestby *cello* - arrangements of works for cello duo
- 11<sup>th</sup> June** Tim Hutchins & Naama Neumann *flute* Nick Salwey *piano* - works by Bach, Quantz & Strauss
- 25<sup>th</sup> June** Thomas Fagg *cello* Nick Salwey *piano* - Schumann Fantasiestücke & Strauss Sonata in F major op. 6

Events, artists and programmes may be subject to change.

### Winchester College - Music Diary

Please find the full diary for this term via  
[www.winchestercollege.org/learning/music](http://www.winchestercollege.org/learning/music)



## Winchester Catholic History Society

Wednesdays at 6.30pm, normally at St Peter's Parish Centre, Jewry Street, Winchester, SO23 8RY unless otherwise noted

**Friday 19 April at Winchester College at 7pm:** The Countess of Carnarvon  
*'Highclere and the Pharoah'*

**NB** Note different day, time and venue!



**Wednesday 15 May:** Christopher Daniell  
*'Death & Burial in Medieval England'*

**Wednesday 19 June at Winchester College at 7pm:** Sir Christopher Frayling  
*'When will it be done? Hollywood, Michelangelo and the Sistine Chapel'*

**NB** Note different time and venue

Lectures last for an hour with questions afterwards  
Non-members £5 at the door, students £2.50 with ID

[www.winchestercatholichistorysociety.com](http://www.winchestercatholichistorysociety.com)

## Law Courts Chaplaincy needs volunteers

Since November, a small team from Winchester City Centre Chaplaincy has worked with the courts, led by Her Honour Judge Morris, to restart this service after a 4 year break. Chaplains are called above all simply to listen and be a calming presence to both staff and visitors at the Courts. If you are interested in joining the team please contact the Revd Tim Searle at [chair@winccc.org.uk](mailto:chair@winccc.org.uk) to find out more or try out a shift.



## The 2024 Festival

Friday 3 - Monday 6 May

Bookings can again be made via the **Box Office at the Theatre Royal Winchester** (Tues-Sat 10am-1pm): in person, by phone 01962 840440, or email [boxoffice@playtothecrowd.co.uk](mailto:boxoffice@playtothecrowd.co.uk)

[www.winchesterchambermusic.com](http://www.winchesterchambermusic.com)



Winchester  
Philharmonic  
Choir

# Come & Sing

Saturday 27th April 2024

St. Michael's Church, Winchester College

## Mendelssohn Elijah

(selected choruses)  
directed by Sarah Baldock



|              |                                                                                                                                                                                                             |
|--------------|-------------------------------------------------------------------------------------------------------------------------------------------------------------------------------------------------------------|
| Timetable    | 10.00am Registration<br>10.30am Rehearsal<br>1.00pm Lunch break<br>2.00pm Resume rehearsal<br>3.30pm Tea and Cakes<br>4.00pm Run through performance<br>5.15pm Finish                                       |
| Location     | St Michael's Church, St Michael's Passage, Culver Road, Winchester, SO23 9JF                                                                                                                                |
| Parking      | There is no parking available on site (except for disabled) and the nearby streets are restricted to 2 hours so please use city centre car parks or the park and ride.                                      |
| Refreshments | Tea and coffee will be served in the breaks, with home made cakes in the afternoon break. You are welcome to bring a picnic lunch and there are plenty of cafés, supermarkets and bars 5 minutes walk away. |
| Cost         | Singers: £20 (including score hire), £5 students under 25<br>Audience: £5, accompanied children free of charge                                                                                              |
| Tickets      | From <a href="http://www.winchestermusicphilharmonicchoir.org.uk">www.winchestermusicphilharmonicchoir.org.uk</a><br>Tickets might be available on the day but advance booking is advised.                  |

[www.winchesterphilharmonicchoir.org.uk](http://www.winchesterphilharmonicchoir.org.uk)



Winchester Philharmonic choir



DIOCESE of  
**WINCHESTER**

The Lay Vocations Morning on 6<sup>th</sup> April, advertised in the March magazine, has been postponed - new date to be announced.





To be opened by Lady Portal MBE DL

**WEDNESDAY 8<sup>th</sup> MAY 2024, 10am to 4pm**

Upper Farm, Down Farm Lane, Headbourne Worthy, SO23 7LA

Entrance £5      Ample parking available on site      Sorry no dogs

A great day out in a beautiful private garden. Come along for gardening inspiration and fantastic shopping with plant nurseries, artisan & homeware products, fashion accessories & delicious foods. Relax over coffee and home-made lunch in the Winchester Go LD Marquee.

Please visit our website for more details:

[www.winchestergold.org.uk/get-involved](http://www.winchestergold.org.uk/get-involved)

### Living life to the full.

Winchester Go LD, The Arc, Jewry Street, Winchester, SO23 8SB.

T: 01962 600281 W: winchestergold.org.uk E: info@winchestergold.org.uk

Patron: Lady Portal (Louisa) MBE, DL Charity number: 1156536

## **Breast Walk Ever Hampshire 2024**

on Sunday 12<sup>th</sup> May 2024



Against Breast Cancer funds pioneering research into new treatments, tools for earlier diagnosis and advice to reduce the risk of recurrence and secondary spread. Working with expert scientists we want

to increase the survival rates of all breast cancer patients and ultimately, discover a vaccine against breast cancer.

The event in aid of 'Against Breast Cancer' is set in the rural grounds of the IBM in Hursley, near Winchester, where there is free on-site parking, refreshments and toilets.

The walking routes are 10K, Half and Full Marathon. Whichever route you choose we are sure there is something for everyone, with just a little preparation. Dogs are welcome too! There is no age limit; participants under 18 must be accompanied by a responsible adult.

Take part and help fund ground-breaking research into secondary spread, the main cause of breast cancer related deaths, much of which is carried out in nearby Southampton.

Each route is fully signposted and marshalled with support stations at regular intervals.

Please see the website for more details:

[www.againstbreastcancer.org.uk/events/breast-walk-ever-hampshire](http://www.againstbreastcancer.org.uk/events/breast-walk-ever-hampshire)

## As we head into the nesting season, some news about the Cathedral's Peregrine Falcons

After the return of our regular pair, Winnie and William, at the end of February, one day people saw three peregrines in the air. Clearly an unattached bird had arrived on the scene and a scuffle followed. This happens quite often and usually it ends quite quickly, but occasionally it can lead to injury - and now we can confirm that Winnie was found dead the next day. Although this is upsetting, it is the natural course of events in nature - the younger individuals displace the older ones, and the cycle of life goes on.

William has been at the nesting tray regularly since then and when he has not been around, the new female has checked it out as well. She clearly likes it as she has already made a dent in the shingle, indicating that she wants to lay eggs there. Let's hope that we will have the joy of welcoming a new brood of peregrine chicks soon.

Winnie had nested at the Cathedral since 2017, and prior to that she reared several broods on the old Police HQ. She was probably quite young then, but by this year she was at least 15 years old, which is a great age for a peregrine. In that time, she reared at least 27 chicks to fledge and her chicks are known to be nesting in several nearby counties.

*Keith Betton (Chair of Hampshire Ornithological Society) on behalf of Winchester Cathedral, via Chris Pilgrim*



Winnie (photo by Keith Betton)

**PLANT SALE**  
for  
**MUSCULAR DYSTROPHY UK**  
fighting muscle wasting conditions



on Saturday 27<sup>th</sup> April from 10am  
at 22 Monks Road, Winchester SO23 7EQ

Flowers - Tomatoes - Peppers - Vegetables - Fruit

**PICK A PLANT, DONATE, FIGHT MUSCULAR DYSTROPHY**



## Come & Sing!

Southern Voices are inviting local singers to come and sing with them in a choral workshop as part of their 40<sup>th</sup> Anniversary Season on Saturday 4<sup>th</sup> May, St Paul's Church, Winchester, SO22 5AB

Find out what it's like to sing with the choir and their fabulous conductor, Jamal Sutton. The programme has a 'joyful' theme, with works from the English Choral Tradition by Finzi, Elgar and Wood with some Bob Chilcott thrown in to add even more fun. It's on the ambitious side, but all enjoyable music and you will have a good sing!

The accompanist will be the immensely talented George Castle and registration starts at 10am. Bring your own pack lunch and complimentary hot drinks and biscuits will be available. The day concludes with a free concert for your friends and family at 3pm in the church.

The workshop costs £20 (£10 for those 21 and under) including music; please buy your tickets at [www.southernvoices.co.uk/ComeAndSing](http://www.southernvoices.co.uk/ComeAndSing)

Car parking is limited at the church; please use nearby Winchester car parks and allow time to walk to the church.

**Don't be shy, come and sing with us - we really look forward to seeing you there!**



Mayfest is a celebration of music, dance and song  
**on Saturday 18<sup>th</sup> May 2023**

in venues across Winchester, including at ST LAWRENCE CHURCH

Performances include dance 'sides', consisting of different types of Morris dance, sword dancing, clog dancing and Appalachian dancing. This will take place in the High Street, Cathedral Close and St Maurice's Covert. More details to come.

## What is Renew Wellbeing?

“Renew Café” is a new wellbeing café offering “a quiet safe space, where it’s OK to not be OK”. All are welcome every Thursday 2pm-4pm at the Salvation Army Hall on Parchment Street.

Drinks and light refreshments, crafts, games and wellbeing activities will be on offer, or you can just chat. [www.renewwellbeing.org.uk](http://www.renewwellbeing.org.uk)

Renew Wellbeing spaces work on three principles: being prayerful, being present and being in partnership.



**Exciting new café!**

On 1 February 2024, Renew Wellbeing is opening a wellness café right here in Winchester!

We would love to see you there!  

**Find us at:** Salvation Army Hall on Parchment Street, Winchester, SO23 8AZ

**Every Thursday**  
From 14:00-16:00

To find out more, contact Alison Dolphin at:  
[wellbeingcafeandhub@gmail.com](mailto:wellbeingcafeandhub@gmail.com)

**How to get here**

-  Park at River Park car park, or at nearby St Peters or Middle Brook Street
-  By train: Winchester train station is an 8-minute walk away
-  By bus: The bus station is an 8 minute (directly bus) walk away from the Salvation Army Hall and there are bus stops close by on the B3330
-  Solex Mind wellbeing centre, also on Parchment Street, is just one minute away!

[renewwellbeing.org.uk](http://renewwellbeing.org.uk)

Looking for a welcoming brew and some great company? Keen to learn new skills or enjoy some down time? We're excited to announce the launch of Winchester's very own Renew Wellbeing Café.

Every Thursday from 14:00 - 16:00, the Salvation Army Hall will transform into a welcoming sanctuary for connection and community.

In addition, once a month, the Anna Chaplaincy is organising some Vintage Fun at United Church. Each afternoon offers friendship to break the isolation some find when growing older.

Finally, Winchester's community radio station has a very special offer for local charities and non-profit organisations. Free advertising, sponsored by local companies. If people in your church run companies or lead charities, they can get involved in Winchester Radio.



## BCM Summer Programme

Applications for the new BCM (Bishop's Commission for Mission) Summer Programme are now open. The programmes being offered in the summer are: BCM Children Families & Youth, BCM Pastoral, and BCM Worship.

The programme launch is on **Saturday 20 April** at 10am at Wolvesey, with sessions then continuing on Wednesday evenings, 7pm-8.30pm on the following dates: 24 April; 1, 5, 22 May; 12, 19 June.

These courses are aimed at equipping and inspiring lay people to become more confident in their service within their church and community, growing in understanding that all are a valuable part of the mission of God!

For more information and application form, see

[www.winchester.anglican.org/winchester-school-of-mission/bishops-commission-for-mission](http://www.winchester.anglican.org/winchester-school-of-mission/bishops-commission-for-mission) or contact Wendy Atkinson at [wendy.atkinson@winchester.anglican.org](mailto:wendy.atkinson@winchester.anglican.org)



**trinity's**  
**big sleep out**

**24 MAY 2024**

**WAKE UP TO HOMELESSNESS IN THE GROUNDS OF WINCHESTER COLLEGE**  
**Friday 24th May 2024**

£6 per child | £12 per adult | £60 for groups  
**Register today: [bigsleepout2024.eventbrite.co.uk](https://bigsleepout2024.eventbrite.co.uk)**

**trinity** support change aspire  
**WINCHESTER**

© Camilla Winter-Moore



TRINITY are delighted to launch the biggest fundraising event for homelessness in Winchester!

On Friday 24<sup>th</sup> May 2024 join us for a night under the stars in the Warden's Garden of **Winchester College**. Sleep out in homemade cardboard shelters, and enjoy local food and entertainment while raising money and awareness for those facing homelessness.

Last year you helped us raise over £27,000 to support our services, and we couldn't have done it without you.

Every penny that you raise in sponsorship will go back into Trinity's services, offering long-term, positive change.

Take part in shelter building activities and win fantastic prizes.

Enjoy music and entertainment from local artists and delicious food and drinks from local businesses.

Breakfast for all the sleepers!

There's a Wellbeing area including activities such as yoga and reflexology.

To get your tickets, go to [bigsleepout2024.eventbrite.co.uk](https://bigsleepout2024.eventbrite.co.uk)



Applications are **now open** to join our almshouse community in one of our existing or new Colebrook Street almshouses.

What can you expect from living at St John's?

- A vibrant and caring community in the heart of Winchester where residents can flourish on their own terms. Residents can lead a fully independent life with a choice to participate in a wide range of activities.
- A compassionate welfare team are available 24/7 to support residents maintain their independence.

A range of available accommodation options, catering to individuals with minimal or no care requirements, as well as those with higher care needs.

[www.stjohnswinchester.co.uk/housing-care-and-community-support/almshouses](http://www.stjohnswinchester.co.uk/housing-care-and-community-support/almshouses)



## Fairtrade Fortnight

will be from

**Monday 9 September - Sunday 22 September 2024**

(not in the Spring as before)

2024 is their 30<sup>th</sup> birthday, so they will use the occasion to highlight how 30 years of working together has made the Fairtrade Mark a leader of life-changing impact for farmers and workers across the world. More details to come.

## Icon Painting Course

*10-14 June, 8-12 July, 5-13 October*

Three courses on icon painting, in June, July and October, are being run at St Peter's Church, Soberton. The icons will be painted in the traditional Byzantine style using egg tempera, gold leaf and wooden panels. Drawings are provided, so don't worry if you're a beginner! Each course costs £295 which includes all materials.



For more information, download a flyer at

[www.winchester.anglican.org/wp-content/uploads/2024/03/Icon-courses-flyer-2024.pdf](http://www.winchester.anglican.org/wp-content/uploads/2024/03/Icon-courses-flyer-2024.pdf)

or email Jackie Hunt at [jack@swallow2.plus.com](mailto:jack@swallow2.plus.com)



## Digital skills for everyday life

*Free courses for ages 19 years plus, living within Hampshire*

**GCS** (Formally RCS) are offering a free IT course which builds on your confidence levels with using digital skills in everyday life.

The course will cover; email software, word processing, sending files, creating documents, staying safe while navigating the internet and accessing online services

**DATE: Monday 8<sup>th</sup> April**  
**TIME: 10.00 to 14.00**  
**VENUE: The Winchester club, SO23 7AB**

*X 3 weeks: Mondays 8<sup>th</sup>, 15<sup>th</sup> & 22<sup>nd</sup> April. All days to be attended*

Contact us **01264 359223**  
[rcsserviceseducation@gmail.com](mailto:rcsserviceseducation@gmail.com)




### Organ Concert at Winchester Cathedral

To celebrate the restoration of the Cathedral organ

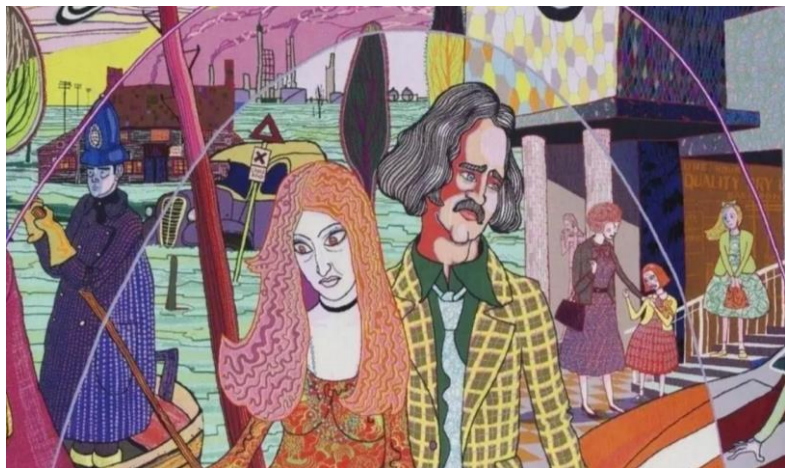
Saturday 27<sup>th</sup> April at 6.30pm

An evening with spectacular music performed by world renowned organist Olivier Latry

For programme and booking please visit  
[www.winchester-cathedral.org.uk/event/organ-concert-olivier-latry](http://www.winchester-cathedral.org.uk/event/organ-concert-olivier-latry)

Tickets £20 (with concessions)

## Grayson Perry: Essex House Tapestries - The Life of Julie Cope



Detail of *A Perfect Match*, Grayson Perry, 2015

Exhibition open daily until 12<sup>th</sup> June 2024 at The ARC, Winchester

£4.50 Adult or £5 with gift aid donation; concessions available

Book online:

[www.arcwinchester.org.uk/event/grayson-perry-essex-house-tapestries-life-julie-cope](http://www.arcwinchester.org.uk/event/grayson-perry-essex-house-tapestries-life-julie-cope)



### Songs from The Musicals and other great songs

Saturday 4th May  
7-9pm

Winchester  
Rugby Club

Raffle &  
Cake sale

Free Parking



North Walls Park  
(Off Nun's Walk)  
SO23 7EF

Bar

Tickets cost £12.50

(£7.50 for children under 12 years and Winchester Go LD members)

In aid of Winchester Go LD and St Bartholomew's Hyde

Available to buy online from:

<https://winchestergold.org.uk/supporting-us/shop/>





## ADVERTISEMENTS



Available 24 hours  
Personalised Service  
Central Winchester Offices  
with off road parking

EST **RICHARD STEEL** 1860

& PARTNERS

FUNERAL DIRECTORS

Serving Winchester since 1860

01962 862333

www.steelsfunerals.co.uk



Bespoke Funeral Plans  
Advance Funeral Planning  
Exclusive Funeral use of  
Chesil House, Winchester

### Reads of Winchester Suppliers of Sewing Machines

We sell most makes of sewing machine and overlockers (new and reconditioned), also industrial machines.  
Servicing and repairs for all types of machine.  
Range of accessories & threads.

**First Floor, 62 High Street,  
Winchester, SO23 9BX  
01962 850950**

**Open Monday to Saturday 9 to 5pm**



**Has someone close to you died recently?  
Would it help to talk?**

**Tel: 07450 649679**

**email:referrals@**

**winchesterbereavementsupport.org.uk**

Is it time for a fresh approach to your healthcare?

Prompt, holistic private GP consultations

Cutting edge Wellness & Cancer Screening

Specialist Menopause service

Subscribe from £46/month



Winchester GP

01962 776010

www.winchestergp.com

## Raphael's "Resurrection of Christ"

The painting shown on our front cover this month is one of Raphael's early works, painted when he was about 18. It may have been part of an altarpiece for a church in Città di Castello, in northern Umbria, which was completed in 1501 but badly damaged in an earthquake in 1789; some fragments are now in various collections.

Christ is shown rising from the empty tomb; as in many paintings of the Resurrection he holds a white banner (for purity) with a cross in red (for his blood). Beside him are two angels holding ribbons that once were probably silver but have tarnished to black over time. In the background landscape are Mary Magdalene, Mary the mother of James, and Salome, on their way to anoint Jesus' body (Mark 16).

The bird standing in the background, on the right by the river, is a crane, which may symbolise endurance (it migrated from Africa) and resurrection (it appeared in Italy in the spring, about Eastertide); notably, cranes are skilled at killing snakes. In the foreground, a snake slithers in the grass, referencing Satan, signifying that Christ's resurrection has defeated Satan, and he no longer holds any power.



The four guards stationed to guard the tomb are at the corners of the sarcophagus, each responding to Christ coming forth. The two in front have fallen down, arms raised as if warding off an attack. The other two guards are standing and gesturing toward Christ. Each guard's hand points in a different direction, signifying that the resurrected Christ will draw together his people from across the world: "And He will lift up a standard for the nations and assemble the banished ones of Israel, and will gather the dispersed of Judah from the four corners of the earth" (Isaiah 11:12).

*John Stanning*

---

## "When a Knight Won His Spurs"

On page 19 Richard Stead quotes the first verse of a hymn by Jan Struther (pen-name of Joyce Anstruther, 1901-1953). Here are all three verses:

When a knight won his spurs, in the stories of old,  
 he was gentle and brave, he was gallant and bold;  
 with a shield on his arm and a lance in his hand,  
 for God and for valour he rode through the land.

No charger have I, and no sword by my side,  
 yet still to adventure and battle I ride,  
 though back into storyland giants have fled,  
 and the knights are no more and the dragons are dead.

Let faith be my shield and let joy be my steed  
 'gainst the dragons of anger, the ogres of greed;  
 and let me set free with the sword of my youth,  
 from the castle of darkness the power of the truth.

The hymn was set to an English folk melody and appeared in the *Common Praise* hymn book. In this benediction we formerly sang, to the same tune, an "Advent Wreath Song" written by Cliff Bannister for the lighting of the Advent candles.

*John Stanning*

**The Three Saints Benefice of St Bartholomew and  
St Lawrence with St Swithun-upon-Kingsgate**

**Ministry Team**

|                            |                                                                                                                           |                                                                                |
|----------------------------|---------------------------------------------------------------------------------------------------------------------------|--------------------------------------------------------------------------------|
| RECTOR                     | The Revd Karen Kousseff<br>St Bartholomew's House, 1 Abbey Hill Close, SO23 7AZ<br>Tel. (01962) 850956<br>Day off: Monday | e-mail: <a href="mailto:karen@threesaints.org.uk">karen@threesaints.org.uk</a> |
| HONORARY ASSOCIATE PRIEST  | The Revd Amanda Goulding<br>c/o St Lawrence Parish Office, Colebrook Street, Winchester, SO23 9LH<br>Tel. (01962) 884585  | e-mail: <a href="mailto:agoulding@btinternet.com">agoulding@btinternet.com</a> |
| LICENSED LAY MINISTER      | Meriel Walton<br>Tel. (01962) 852239                                                                                      | e-mail: <a href="mailto:merielwalton@yahoo.co.uk">merielwalton@yahoo.co.uk</a> |
| CHILDREN & FAMILIES WORKER | <i>vacant</i>                                                                                                             |                                                                                |

---

**Benefice Contacts**

|                                 |                                                                                                                                                                                          |                                           |                                                                                                                                                                                                                                |
|---------------------------------|------------------------------------------------------------------------------------------------------------------------------------------------------------------------------------------|-------------------------------------------|--------------------------------------------------------------------------------------------------------------------------------------------------------------------------------------------------------------------------------|
| SPACE IN THE CITY               | Amanda Goulding                                                                                                                                                                          | Tel. 884585                               | <a href="mailto:agoulding@btinternet.com">agoulding@btinternet.com</a>                                                                                                                                                         |
| MAGAZINE EDITORS                | Caroline St Leger-Davey<br>Jill Bath<br>John Stanning                                                                                                                                    | Tel. 865716<br>Tel. 865848<br>Tel. 867995 | <a href="mailto:caroline.stleger@gmail.com">caroline.stleger@gmail.com</a><br><a href="mailto:jillbath@btinternet.com">jillbath@btinternet.com</a><br><a href="mailto:john.stanning@yahoo.co.uk">john.stanning@yahoo.co.uk</a> |
| LITTLE WRIGGLERS                | The Revd Karen Kousseff                                                                                                                                                                  | Tel. 850956                               | <a href="mailto:karen@threesaints.org.uk">karen@threesaints.org.uk</a>                                                                                                                                                         |
| DATA PROTECTION OFFICER         | John Stanning                                                                                                                                                                            | Tel. 867995                               | <a href="mailto:dpo@threesaints.org.uk">dpo@threesaints.org.uk</a>                                                                                                                                                             |
| CHURCHES TOGETHER IN WINCHESTER | Meriel Walton                                                                                                                                                                            | Tel. 852239                               | <a href="mailto:merielwalton@yahoo.co.uk">merielwalton@yahoo.co.uk</a>                                                                                                                                                         |
| CHRISTIAN AID                   | Meriel Walton                                                                                                                                                                            | Tel. 852239                               | <a href="mailto:merielwalton@yahoo.co.uk">merielwalton@yahoo.co.uk</a>                                                                                                                                                         |
| PASTORAL MINISTRY GROUP         | Elizabeth Baron                                                                                                                                                                          | Tel. 855090                               |                                                                                                                                                                                                                                |
| HOUSE GROUP CO-ORDINATOR        | Parish Office                                                                                                                                                                            | Tel. 849434                               | <a href="mailto:office@threesaints.org.uk">office@threesaints.org.uk</a>                                                                                                                                                       |
| ENVIRONMENTAL OFFICER           | Christine Pilgrim                                                                                                                                                                        | Tel. 852226                               | <a href="mailto:deygrim@aol.com">deygrim@aol.com</a>                                                                                                                                                                           |
| WINCHESTER GOOD NEIGHBOURS      | <i>For Good Neighbourly help (part of a Hampshire-wide network)</i><br>Tel. 0800 6126 480 <a href="mailto:winchestergoodneighbours@outlook.com">winchestergoodneighbours@outlook.com</a> |                                           |                                                                                                                                                                                                                                |

---

Benefice website: [www.threesaints.org.uk](http://www.threesaints.org.uk)

The Church of England's "A Church Near You" website [www.achurchnearyou.com](http://www.achurchnearyou.com) has information for each church.

The Benefice on Facebook: [www.facebook.com/threesaintswinchester](http://www.facebook.com/threesaintswinchester) or click on the **f** icon on the Benefice website

St Bartholomew's on Facebook: [www.facebook.com/stbartholomewschurchwinchester](http://www.facebook.com/stbartholomewschurchwinchester)

St Bartholomew's on Instagram: [www.instagram.com/stbartholomewschurchwinchester](http://www.instagram.com/stbartholomewschurchwinchester) or click on the **@** icon on the Benefice website

---

**Administrator for the benefice, and St Lawrence Parish Room bookings**

Sara Gangai  
St Lawrence Parish Office, Colebrook Street, Winchester, SO23 9LH  
Monday afternoons, Wednesdays and Fridays  
e-mail: [office@threesaints.org.uk](mailto:office@threesaints.org.uk)      Tel. 01962 849434 (24 hour answerphone)

*The benefice comprises two parishes, working together but legally distinct entities: each is a charity in its own right.*

### St Bartholomew Parish Directory

|                                           |                                                |                        |                    |              |
|-------------------------------------------|------------------------------------------------|------------------------|--------------------|--------------|
| CHURCHWARDEN                              | Malcolm Bruce*†                                | 861644                 |                    |              |
| DEPUTY CHURCHWARDENS                      | Alys Blakeway                                  | 868581                 | Lawrence Talks     | 07909 997734 |
| DEANERY SYNOD REPRESENTATIVE              | Alys Blakeway                                  | 868581                 |                    |              |
| ELECTED PCC MEMBERS                       | Duncan Boyd*                                   | 07990 531221           | Lawrence Talks     | 07909 997734 |
|                                           | Rosemary Burns                                 | 862849                 | Andrew Wainwright* | 859789       |
|                                           | Alan Gordon                                    | 868616                 |                    |              |
| HON. TREASURER                            | Duncan Boyd*                                   | 07990 531221           |                    |              |
| HON. SECRETARY TO THE PCC                 | Lis Wicks                                      |                        |                    |              |
|                                           | <i>stbpcsec@threesaints.org.uk</i>             |                        |                    |              |
| SAFEGUARDING OFFICER                      | Rosie Duffy                                    |                        |                    |              |
|                                           | <i>safeguarding.stbarts@threesaints.org.uk</i> |                        |                    |              |
| HEALTH & SAFETY OFFICER                   | Linda Jarvis                                   | 07714 755072           |                    |              |
| ELECTORAL ROLL OFFICER                    | Jeannette Archdeacon                           | 864556                 |                    |              |
| GIFT AID SECRETARY                        | Andrew Wainwright                              | 859789                 |                    |              |
| GIVING FOR LIVING @ ST BART'S COORDINATOR | Andrew Wainwright                              | 859789                 |                    |              |
| HISTORIC CHURCHES "RIDE & STRIDE"         | Andrew & Julia Wainwright                      | 859789 or 07813 339847 |                    |              |

\* *Members of the Standing & Finance Committee*

† *Vice-Chair of the PCC*

*The Parochial Church Council (PCC) comprises the ministers licensed to the benefice, the elected Churchwarden and the elected Deanery Synod representative, all of whom are 'ex-officio' members of the PCC, and the directly-elected members listed above.*

#### Postcodes for our sites

Please send all post to the Parish Office for the benefice:  
St Lawrence Parish Office, Colebrook Street, Winchester, SO23 9LH

Postcodes for use with satnavs - *please don't send post to these sites:*

- St Bartholomew Church: King Alfred Place, SO23 7DF
- St Lawrence Church: The Square, SO23 9EX
- St Swithun-upon-Kingsgate Church: St Swithun Street, SO23 9JP
- Hyde Parish Hall (close to St Bartholomew Church):  
55 Hyde Street, SO23 7DY
- St Lawrence Parish Room: Colebrook Street, SO23 9LH  
(in front of the Parish Office)

On smartphone mapping apps, you'll get better guidance by entering the name, e.g. "St Bartholomew, Winchester", rather than the postcode.

## St Lawrence with St Swithun Parish Directory

|                               |                    |     |        |                |     |        |
|-------------------------------|--------------------|-----|--------|----------------|-----|--------|
| CHURCHWARDENS                 | Beauman Chong*†    | Tel | 866488 | John Stanning* | Tel | 867995 |
| DEANERY SYNOD REPRESENTATIVES | Nick Goulding*     | Tel | 884585 | Tom Nell       | Tel | 861448 |
| ELECTED PCC MEMBERS           | Elizabeth Baron    | Tel | 855090 | Louise Kerr    | Tel | 862317 |
|                               | Anna Bennetts      | Tel | 853234 | Clare Kilroy   | Tel | 862317 |
|                               | Geoffrey Bennetts* | Tel | 853234 | Ros Nell       | Tel | 861448 |
|                               | Chris Higgins      | Tel | 855595 | Richard Stead  | Tel | 865556 |

|                           |                 |                                      |
|---------------------------|-----------------|--------------------------------------|
| HON. SECRETARY TO THE PCC | Lis Wicks       | <i>stlspccsec@threesaints.org.uk</i> |
| HON. TREASURER            | Nick Goulding*  | Tel 884585                           |
| HON. ASSISTANT TREASURER  | Bethany Milward | Tel 854558                           |

\* *Members of the Standing & Finance Committee*

† *Vice-Chair of the PCC*

*The Parochial Church Council (PCC) comprises the ministers licensed to the benefice, the elected Churchwardens and the elected Deanery Synod representatives, all of whom are 'ex-officio' members of the PCC, and the directly-elected members listed above.*

|                                               |                            |                                                           |                 |            |
|-----------------------------------------------|----------------------------|-----------------------------------------------------------|-----------------|------------|
| LEGACY AND STEWARDSHIP OFFICERS               | Beauman Chong              | Tel 866488<br><i>beauman_chong@hotmail.com</i>            |                 |            |
|                                               | Christine Pilgrim          | Tel 852226<br><i>deygrim@aol.com</i>                      |                 |            |
| GIFT AID SECRETARY                            | Tom Nell                   | Tel 861448                                                |                 |            |
| SAFEGUARDING OFFICER                          | Kathryn Whelan             | Tel 856040<br><i>safeguarding.stls@threesaints.org.uk</i> |                 |            |
| ELECTORAL ROLL OFFICER                        | John Stanning              | Tel 867995                                                |                 |            |
| HEALTH & SAFETY OFFICER                       | Beauman Chong              | Tel 866488                                                |                 |            |
| SOCIAL EVENTS COMMITTEE                       | Judith Chong               | Tel 866488                                                |                 |            |
| PARISH ROOM COMMITTEE                         | Louise Kerr                | Tel 862317                                                |                 |            |
| ST LAWRENCE BROWNIES & GUIDES                 | Elizabeth Baron            | Tel 855090                                                |                 |            |
| HISTORIC CHURCHES "RIDE & STRIDE"             | Louise Kerr & Clare Kilroy | Tel 862317                                                |                 |            |
| CHARITABLE GIVING AND OVERSEAS GROUP CONVENER | Meriel Walton              | Tel 852239                                                |                 |            |
| ORGANISTS                                     | <i>St Lawrence</i>         | Luke Fowler & Christopher Tolley                          |                 |            |
| FLOWERS                                       | {                          | <i>St Lawrence</i>                                        | Judith Chong    | Tel 866488 |
|                                               |                            | <i>St Swithun</i>                                         | Jane Powlett    | Tel 865345 |
|                                               |                            |                                                           | Veronica Cornes | Tel 852027 |

| Useful phone numbers                                 |              |                                                        |               |
|------------------------------------------------------|--------------|--------------------------------------------------------|---------------|
| Out-of-hours medical help                            | 111          | Police non-urgent                                      | 101           |
| St Paul's medical practice                           | 01962 853599 | To report a BT landline fault                          | 0800 800 151  |
| Friarsgate medical practice                          | 01962 871730 | Winchester City Council offices                        | 01962 840222  |
| St Clement's medical practice                        | 01962 852211 | Bus station                                            | 0345 121 0190 |
| Royal Hampshire County Hospital                      | 01962 863535 | National Rail enquiries                                | 0800 5282 100 |
| Samaritans 24-hr helpline                            | 116123       | Domestic abuse 24-hr helpline                          | 0808 2000 247 |
| Trinity Drop-in Day Centre, Bradbury House, Durngate | 01962 842827 | In need of a bed? WCC housing office, Colebrook Street | 01962 840222  |



The Three Saints Benefice of St Bartholomew and  
St Lawrence with St Swithun-upon-Kingsgate, Winchester

## SERVICES IN APRIL 2024

|    |                                    |         |                                    |                |
|----|------------------------------------|---------|------------------------------------|----------------|
| 3  | Wednesday                          |         | (No Holy Communion at St Lawrence) |                |
| 5  | Friday                             | 10.00am | Coffee Morning .....               | St Lawrence    |
| 7  | <b>The Second Sunday of Easter</b> | 10.00am | All Together Service .....         | St Bartholomew |
|    |                                    | 10.00am | Holy Communion .....               | St Lawrence    |
|    |                                    | 6.00pm  | Evensong .....                     | St Swithun     |
| 14 | <b>The Third Sunday of Easter</b>  | 10.00am | Holy Communion and APCM .          | St Bartholomew |
|    |                                    | 10.00am | Morning Worship .....              | St Lawrence    |
|    |                                    | 6.00pm  | Holy Communion .....               | St Swithun     |
| 16 | Tuesday                            | 10.30am | Coffee Morning .....               | St Bartholomew |
| 17 | Wednesday                          | 11.30am | Holy Communion .....               | St Bartholomew |
| 21 | <b>The Fourth Sunday of Easter</b> | 10.00am | Morning Worship .....              | St Bartholomew |
|    |                                    | 10.00am | Holy Communion and APCM .          | St Lawrence    |
|    |                                    | 6.00pm  | Evensong .....                     | St Swithun     |
| 28 | <b>The Fifth Sunday of Easter</b>  | 10.00am | Holy Communion .....               | St Bartholomew |
|    |                                    | 10.00am | Morning Worship .....              | St Lawrence    |
|    |                                    | 12noon  | Baptism of Alice Minnican ..       | St Bartholomew |
|    |                                    | 6.00pm  | Evensong .....                     | St Swithun     |

## MAY

|   |                                   |         |                            |                |
|---|-----------------------------------|---------|----------------------------|----------------|
| 1 | Wednesday                         | 10.30am | Holy Communion .....       | St Lawrence    |
| 3 | Friday                            | 10.00am | Coffee Morning .....       | St Lawrence    |
| 5 | <b>The Sixth Sunday of Easter</b> | 10.00am | All Together Service ..... | St Bartholomew |
|   |                                   | 10.00am | Holy Communion .....       | St Lawrence    |
|   |                                   | 6.00pm  | Evensong .....             | St Swithun     |

Services at St Lawrence and St Swithun churches are normally 'live-streamed' on Zoom: please see [www.threesaints.org.uk/services](http://www.threesaints.org.uk/services) for details.