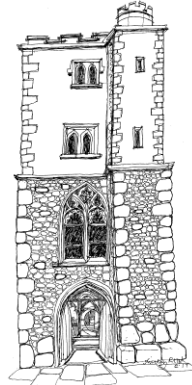




Parish Magazine of St Bartholomew, Hyde and St Lawrence with St Swithun-upon-Kingsgate, Winchester



FEBRUARY 2024



The Three Saints Benefice of St Bartholomew and St Lawrence with St Swithun-upon-Kingsgate, Winchester

Welcome

As the Church of England for Hyde, Abbotts Barton and Winchester city centre, our three historic churches together form two inclusive parishes and one friendly benefice family, where you will be sure of a warm welcome.

For all our news and lots of information, from the spiritual to the social, please make sure you are on the mailing list for our weekly newsletter (by email), or see our website www.threesaints.org.uk

Prayer requests can be sent to the Parish Office, and please let us know of anyone in our parishes who needs our practical help.

May you know the joy and peace of Christ in all that 2024 may bring.

Revd. Karen

Rector:	The Revd Karen Kousseff St Bartholomew's House, 1 Abbey Hill Close, Winchester, SO23 7AZ Tel. (01962) 850956, email karen@threesaints.org.uk
Assistant Priest:	The Revd Amanda Goulding
Licensed Lay Minister	Meriel Walton
Children & Families Worker	<i>vacant</i>
Churchwardens	<u>St Bartholomew</u> Malcolm Bruce, tel. 861644, malcolm.bruce@gmail.com <u>St Lawrence with St Swithun</u> Beauman Chong, tel. 866488, beauman_chong@hotmail.com John Stanning, tel. 867995, john.stanning@yahoo.co.uk
Parish Office for the benefice	St Lawrence Parish Office, Colebrook Street, Winchester, SO23 9LH Tel. (01962) 849434, email office@threesaints.org.uk Monday afternoons, Wednesdays and Fridays
Website:	www.threesaints.org.uk Facebook: click on the f icon on the website

More contact details can be found in the directory at the back of this magazine.

NOTE: political or theological views in articles contributed from external sources do not necessarily represent the views or policy of the editors, PCCs or Ministry Team.

Winchester
February 2024



Dear Friends,

I don't know how you feel about February, but I inherited from my mother a sense of the drear about it, but that was before global warming had struck and the weather became so unexpectedly variable. For those of us who suffer with Seasonal Affective Disorder, we wait in hope of warmer, sunnier days, yet we know that change is a hallmark of the climate crisis, and we may not like what we hope for. We can expect cold, warmth, rain, and storms, but not in any reliable or appropriate order! I rely on the weather forecast and as I write, I can see that the start of February looks surprisingly warm with temperatures rising to 12 degrees - hardly what we might expect.

Managing expectation is a branch of Hope, and touches on what Bishop Philip spoke about in his first Diocesan sermon at the Cathedral on 13th January: he asked that we pray that his hope be kept alive as he starts his ministry with us - a very apposite focus for us all when praying both for ourselves and for others.

It is too easy to lose hope. As we live and as we age, we need to challenge the bleak expectation set for us in society of obstacles, losses, and challenges. They may exist (surely they always have), but as members of the Church we need to embrace the bigger picture that gives us a more encouraging outlook on life. If we express hope, it need not be the tentative and conditional world view that we hear around us.

One Google search states that Hope is '*an optimistic state of mind that is based on an expectation of positive outcomes with respect to events and circumstances in one's life or the world at large.*' It sounds like a properly Christian approach to managing our expectations and our prayer life, despite evidence to the contrary that the media feed us with on a daily basis. Furthermore, living in hope is also, '*to expect with confidence and to cherish a desire with anticipation.*' When we pray for all the troubles of the world, how often do cherish a picture of peace, praying in expectation of things moving out of darkness into light?

At the funeral service we speak of 'sure and certain hope' of resurrection to eternal life and that is surely what lies at the heart of our faith and at the heart of Lent? As we begin again this season which takes us from repentance on Ash Wednesday (14th February) to the joy of the resurrection on Easter Sunday (31st March) we follow for 40 days and nights, a 'living hope', in expectation that all *will be well* as it was that first Easter Day 2000 years ago; and as it will surely be, even if for now we suffer in seeing so much suffering in the world (1 Peter 1.3-9).

In the hope of His Kingdom come on earth,

Amanda

Our Services

We welcome you to the weekly services in each of our three churches.

Please do not attend if you have any symptoms of Covid-19 or have recently been in close contact with someone who has; you can join the services on Zoom instead.

There will not be an offertory collection during the service but donations for each church are greatly appreciated and can be left in the plate on your way in, or made online to either parish via our website. Thank you.

Access: We are unable to provide disabled access to the church of St Swithun, but there is level access to St Bartholomew (from Hyde Church Path) and to St Lawrence.

Online services from St Lawrence and St Swithun's

Our Sunday services at St Lawrence and St Swithun's are routinely live-streamed. You can join us on Zoom using meeting number 828 4610 0818 and passcode 3Saints20. We are pleased to welcome you online.

We currently live-stream very simply using a mobile phone. Please bear with us if there are any temporary problems with our online broadcast and forgive us if there are any significant technical issues. We strive to ensure that all of our online events are held safely and without technical hitches but it is impossible to eliminate these completely and so we apologise in advance should there be any disruptions.

Regular Services

Our general pattern of worship continues as below, with changes for special occasions.

SUNDAY	<i>St Bartholomew</i>	<i>St Lawrence</i>	<i>St Swithun</i>
1 st	10am <i>All Together</i> service	10am Holy Communion	6pm Evensong (BCP)
2 nd	10am Holy Communion	10am Morning Worship	6pm Holy Communion
3 rd	10am Morning Worship	10am Holy Communion	6pm Evensong (BCP)
4 th	10am Holy Communion	10am Morning Worship	6pm Evensong (BCP)
5 th	10am Benefice Communion alternately at St Bartholomew & St Lawrence		6pm Evening Prayer (Common Worship)

Midweek Holy Communion

1st Wednesdays, 10.30am at St Lawrence

3rd Wednesdays, 11.30am at St Bartholomew

(but for this month's midweek services, see pages 7-8)

MAGAZINE COPY: Copy deadline for the March 2024 issue is **Sunday 18th February** - but, as usual, the Editors would prefer to receive material earlier. Please send contributions to the joint Editors:

- Diary and notices to Jill Bath, jillbath@btinternet.com
- Parish news, reports and articles to John Stanning, john.stanning@yahoo.co.uk, or by post to the Parish Office.

MAGAZINE ADVERTISING: Please contact the Parish Office.

Church Family News

Births

Congratulations to Carol and Keith Pusey on the birth of their granddaughter, Isabella Grace on 9th December. Proud parents are Clare and husband Dan. Many of us remember that Clare was one of the first girls to sing in the Salisbury Cathedral Choir.

Baptisms

Polly Hallett was baptised at St Bartholomew's Church on 3rd December.

Sebastian Williams was baptised at St Swithun's Church on 30th December (*see photo*).



Sebastian Williams with his parents Orla and Henry

Deaths

The Reverend David Warner died on 1st November, aged 99. A thanksgiving for his life was held at St Lawrence Church on 5th December.

Dilys Smith, of Abbots Barton, died on 13th November, aged 100. Her funeral was held at Chesil House on 5th December.

Sheila Moss died on 1st December. Her funeral was held at St Bartholomew's Church on 19th December.

Kate Morgan, formerly of Brendoncare Park Road, died on 7th December aged 85. Her funeral was held at St Paul's, Winchester, on 21st December.

Stella Freeston, sister of the late Wanda Nash and sister-in-law to Archdeacon Trevor Nash (formerly Rector of St Lawrence with St Swithun parish), died on 28th December at Winchester Heights Nursing Home. Her funeral was held at St Lawrence Church on 24th January. We remember her long and loyal attendance at St Lawrence with St Swithun.

Lesley Williams: We are sad to announce the death of Lesley, until recently a faithful member of St Bartholomew's. She died on Sunday 14th January and her funeral will be in Sheffield, but her ashes will be interred at a later date in the Memorial Garden near those of her husband Fabian.

For your Prayers

Please pray for [the Rt Revd Philip Mounstephen](#) as he begins his public ministry as our Diocesan Bishop. We welcomed him to St Lawrence Church and to Winchester Cathedral on 13th January 2024. *See report and photos on pp10-14.*

Please pray for [Bishop Debbie](#) as she leaves this diocese to become Bishop of Peterborough. and for [the Rt Revd Geoff Annas](#), newly appointed Acting Bishop of Southampton.

Please pray for the [sick and housebound](#) and all who care for them; and for the departed and all who mourn.

Please pray for our [Children & Families ministry](#), including our links with St Bede School and our Little Wrigglers toddler group.

Care Homes: Please pray for the staff and residents of Abbots Barton Care Home, where Revd Karen continues to take monthly communion services.

**A Statement on behalf of the Parochial Church Council (PCC)
of St Bartholomew's Church, Hyde
12th January 2024**

Sale of Hyde Parish Hall

With the approval of the Diocese, as custodian trustee, and following proper professional advice in line with its obligations under Charity Commission regulations, the PCC has now sold the Hall to the Winchester Muslim Cultural Association (WMCA).

The proceeds of the disposal of the Hall, in conjunction with the ongoing 'Giving for Living' Appeal, will enable the PCC to prioritise the refurbishment and upkeep of St Bartholomew's Church, which holds a significant place in the heritage of the city and is in serious need of repair and upgrading. Some exciting initiatives are planned, designed to breathe new life into this ancient building, and equip it as a vibrant place of

- **Living History:** as the only complete remnant of Hyde Abbey and the base for the commemoration of King Alfred the Great
- **Living Faith:** as the Parish Church for Hyde and Abbots Barton
- **Living Community:** as a comfortable and welcoming space for concerts, plays, talks and other social gatherings.

These will include increasing the comfort by installing a more efficient and environmentally friendly heating system; creating a heritage area to tell the story of Hyde Abbey to visitors; improving the level access path for the benefit of wheelchair users and buggies; creating a more flexible space for wider use; renewing the internal decor; and investigating the possible existence of medieval wall paintings.

The PCC is pleased to note the WMCA's stated intention to keep the Hall available for community use. Enquiries about booking the Hall should now be directed to secretary@winchestermuslims.org.uk

As Christians, we share with the Muslim community our ancient roots in faith and our desire to love and serve our neighbours, so we look forward to seeing both the Church and Hall continue to bless the community for many years to come.

On behalf of the PCC of Hyde

The Revd Karen Kousseff, Rector
karen@threesaints.org.uk

Malcolm Bruce, Churchwarden
malcolm.bruce@gmail.com

www.threesaints.org.uk/st-bartholomew

On the day before completion, Revd Karen spent some time in the Hall in prayer, marking this significant moment in the life of the parish and the hall itself:

Thanksgiving for

- the original conversion of a house, gifted to the Hyde church and its community in 1899
- all the community life it has hosted in the years since then
- the work and care of Lorraine Curtis, who has managed the bookings and hirers for many years
- all who have cleaned and cared for the building, and for those who have used it

Prayers for

- those who have precious memories of events held there who may be feeling nostalgic
- the new owners and the work of repair and restoration they will carry out
- for the tenants, community groups and all who will enjoy gatherings there in the future
- good relationships with the church and within the community
- the work of refurbishment that will now be possible in the church
- **A blessing** on its thresholds and those who will pass over them

The sale of the hall to the Winchester Muslim Cultural Association was completed on 12th January, the necessary but poignant end of a significant chapter in the life of St Bartholomew's Church.

The PCC is deeply grateful to Lorraine Curtis for managing the hall for some 30 years, and we give thanks for all the activities that have brought people together there.

The sale will enable much-needed work to be done in St Bartholomew's Church (beginning this summer with a new heating system). We wish the WMCA well in their new home and pray that the hall and the church will continue to bless the community for generations to come.

~~~~~

Benefice News

St Bartholomew's: Hats, gloves and scarves at the ready! There is now no heating at St Bartholomew's, as the oil tank has failed and needs to be replaced. A straw poll among the congregation agreed that the cost of this and another delivery of oil (around £6000 in total) is not worthwhile for just a couple of months, especially as the PCC plans to have an entirely new heating system installed over the summer. Hopefully we are now over the worst of the cold weather, but blankets are available and please come warmly dressed!

St Bartholomew's Christmas Gift Fair: Many thanks to all who supported the Gift Fair in any way; the total raised for the Giving for Living Appeal was in the region of an amazing £2,300, plus it was a wonderful community event. Plans are already in hand for next year!

The Advent collection at St Lawrence raised £1,775.50 for the children we sponsor at Ikona Hillside School, Uganda, through Kisiizi Partners.

A Christmas Carol: Many thanks to all who came to this remarkable and very enjoyable performance, raising £240 for the Giving for Living Appeal (*see page 20*).

Beer and Carols: Many thanks to all who supported this excellent evening in the Hyde Tavern, especially Rose and Clare who led the singing. It raised £141.45 for the Christian Aid Middle East Crisis Appeal (*see page 20*).

Dance and Sing the Christmas Story: On 20th December St Lawrence hosted an accessible Christmas celebration led by people with learning disabilities. The Blue Apple Singers performed, and other Blue Apple members did the readings. This was a wonderful occasion for members of Winchester GoLD, Blue Apple, BOAZ and everyone with learning disabilities plus their families and friends and members of the parish.

Week of Prayer for Christian Unity 18th-25th January: As part of a pulpit exchange within Winchester Churches Together, St Lawrence welcomed Deacon Tony Darlison, from St Peter's R.C. Church, who preached at the morning service on 21st January.

The Julian Group meets on Zoom **every Tuesday** at 2.30pm for half an hour, reflecting on the same reading, and helping us to keep in touch this way. If you would like to know the reflection please contact Sue Tisdall on 851621.

The Benefice Prayer Group meets on the third Monday of each month, so **19th February**. New members warmly welcome. If interested please contact Sue Tisdall 851621 for more information.

The West View & Neighbours Prayer Group prays for the residents of West View and Alleyne House and for their neighbours, on the 4th Wednesday of the month, 28th February. If anyone would like to know the prayer topics, please contact Alys: alys_blakeway@yahoo.co.uk or 868581.

St Bartholomew's Midweek Communion: the monthly midweek Communion service is normally on the third Wednesday of the month at 11.30am, but this month it will be held on **14th February** as it is Ash Wednesday.

St Lawrence Midweek BCP Communion: This service takes place once a month, at 10.30am on the first Wednesday of the month (**7th February**). NB There will be an additional midweek service on **14th February** as it is Ash Wednesday. Many thanks to Revd Amanda for enabling this.

St Bartholomew's is open to visitors every Saturday 10am - 1pm. Opening the church on Saturdays is proving very successful but more volunteer welcomers are needed to join the team. Please contact Jeannette Archdeacon (864556) if you can help welcome people (with another person).

Men's Breakfast: The next two meetings are on February 10th and March 9th at The Old Vine at the usual time of 8.30am. See the report and further information on page 9.

Orders of Service are available on the benefice website, including prayers for Spiritual Communion for those watching the Holy Communion Service on Zoom.

DATES FOR YOUR DIARY:

Weds 14 th February	Ash Wednesday: Holy Communion with Ashing at St Lawrence at 10.30am, St Bartholomew's at 11.30am, St Swithun's at 7pm
Friday 1 st March	World Day of Prayer
Sunday 10 th March	Mothering Sunday: special service at St Bartholomew at 10am
Sunday 24 th March	Palm Sunday: Lunch at St Lawrence Parish Room, 12.30pm
Sunday 31 st March	Easter Day British Summer Time begins (clocks go forward)
Sunday 14 th April	APCM for St Bartholomew parish
Sunday 21 st April	APCM for St Lawrence with St Swithun parish

Details of some of these events are in the following pages



*You are invited to join us at the monthly
St Lawrence Coffee Morning
The next Coffee Morning is on
Friday 2nd February 2024
10-11.30am*



Hyde Parish Coffee Mornings 2023/24

Although we no longer have use of the Parish Hall, the 'regulars' were determined that we continued to have our monthly Coffee Mornings. By a majority decision it will now be held in the Church on the 3rd Tuesday of each month, so the next one will be on **Tuesday, 20th February**. We meet from 10.30-11.30 am for coffee or tea, biscuits and our usual raffle, as well as companionship.

In 2023 we raised just over £600 for 'The Giving for Living' Appeal and are grateful for the support we receive from the small band of helpers. However, more help would be welcome as well as more 'friendly faces' - we are open to everyone. As you know, we feel quite deeply about keeping up the social side of our beautiful and precious ancient church, so do join us when you can. You will be very welcome. As most of you know, the church can be nippy, so thermals might be the order of the day!

Daphne and Denis Marlow

Men's Breakfast

We met on Saturday 13th January (2nd Saturday in the month, our usual timetable) in The Old Vine at 8.30am. There were 8 of us, including a new visitor, who will come again as he enjoyed the chat and banter. He claimed to be agnostic but with a CofE history.

We discussed several topics, including what St Bart's should, will, and can do with their money from the sale of the Hall, if there is anything left after taxes or Diocese grab. We also talked about why Ukraine was celebrating Christmas twice in 2023. Briefly touched upon the number of national elections taking place around the world in 2024 that involve more than half the world's population. We assiduously avoided politics and especially links with Religion. I wonder what comments that route missed out on.

We meet again on **February 10th** and on **March 9th**, at the usual time of 8.30am and at **The Old Vine**. They allow us a private room and give excellent service and good food which is reasonably priced. Come and join us, we have never been so hungry that we eat visitors, rather we welcome them and their contribution. Send your menfolk along - give them a Saturday off from having to cook breakfast.

Richard Stead

Recycle your old Christmas cards!



Both Christmas cards and birthday cards may be brought to St Lawrence Church and given to Rodney Targett for handing over to be recycled as new cards.

This labour of love by a group of people in Salisbury brings in several hundreds of pounds each year to support the work of The Sudan Medical Fund in both Sudans.

The Sudan Medical Fund was founded by Bishop and Mrs Baker in about 1983. The fund is administered by doctors (and others) in England and by doctors, nurses and paramedics in Sudan. When need is identified and items bought, no money is paid until it is confirmed that the necessary items have reached their destination.

A New Bishop and An Ancient Tradition

Saturday 13th January was a wonderful and inspiring day as we welcomed the public beginning of the ministry of The Right Reverend Philip Mounstephen, the 98th Bishop of Winchester. In a deeply moving service in the Cathedral, Bishop Philip was anointed, clothed in the episcopal stole, cope and mitre, presented with the Diocesan pastoral staff of office, and installed in his 'cathedra'. This chair is the seat of authority (Latin *sedes*, the origin of See), from which the Bishop presides over God's people in his diocese as Teacher, Chief Pastor and Leader. The Cathedral was resplendent with banners, flowers and warm lighting; the singing and music were sublime, and the Bishop gave an inspiring sermon about Heritage, Healing and Hope. Do watch it all on the Cathedral's YouTube Channel if you haven't done so already.

And it all began at the Church of St Lawrence, following ancient tradition, as the Order of Service noted:

"A procession of the clergy and civic authorities conducting a Bishop to his cathedra dates from early times. In the Annals of Winchester we read that in 1206, Peter, Bishop of Winchester, was received in solemn procession and installed in his Cathedral Church on Palm Sunday."

The tradition of coming first to St Lawrence, as the mother church of the city, may date at least from 1366, when the Register of William of Wykeham records:

"The Bishop shall change his shoes in some church or building near the Cathedral Church, to which the archdeacon shall then conduct him; and after making his offering, the Bishop shall enter the porch, and there be stripped of his cope, hood, cap and gloves and then shall the Bishop be robed in pontificals, and the archdeacon shall lead him to the cathedra..."

So it was an honour and a delight to welcome the Bishop for the preliminary ceremony, in which, in accordance with Church custom and law, he made the Declaration of Assent, and swore Oaths of Allegiance to His Majesty the King, and of Canonical Obedience to the Metropolitan His Grace the Lord Archbishop of Canterbury. The Bishop's party included:

- the Archdeacon of Canterbury and the Provincial Registrar;
- from the Diocese, the Bishop of Basingstoke, the Acting Bishop of Southampton, the Archdeacons of Winchester and Bournemouth, the Assistant Archdeacon, the Bishop's Acting Chaplain, the Diocesan Secretary, the Chancellor of the Diocese, and the Diocesan Registrar;
- His Eminence Archbishop Angaelos (the Coptic Orthodox Archbishop of London), and the Roman Catholic Bishop of Portsmouth.

After these formalities, more prayers were said, and John and Beauman then led the way out into The Square. There I announced the Bishop's arrival to the onlookers and he was greeted by civic leaders, including The Mayor of Winchester, the Deputy Chief Executive of Winchester City Council, and the Principal and a Student of The Bishop of Winchester Academy. We then processed to the Cathedral for the Service of Welcome itself.

Among Bishop Philip's illustrious predecessors as Bishop of Winchester, are two with a particular connection with us: St Swithun the bridge-builder, patron saint of our unique 'upper room' church, and Walkelin, the first Norman bishop. As chaplain to William the Conqueror, Walkelin must have led worship in the palace chapel, the foundations of which are under St Lawrence Church (and he oversaw the building of the great Cathedral!).

Bishop Philip, in his sermon, noted that our heritage should be "not so much a weight, as a wellspring." It marks how God has been at work in and through the people of this place, including King Alfred the Great, whose legacy we commemorate at St Bartholomew. Our history is a deep well from which we should draw inspiration, so that we in turn, as agents of Christian hope, may leave "a legacy of grace, a legacy of learning and serving and growing, of loving." Amen!

Revd Karen

The ceremony at St Lawrence



Photos by Judith Chong, Chris Pilgrim and Harvey Mills (© Harvey Mills, used by kind permission).
Montage by Chris Pilgrim

The ceremony at the Cathedral



Photos © Harvey Mills, used by kind permission
 Montage by Chris Pilgrim

Full details of the Service of Welcome for Bishop Philip are now on the Diocese website, including his Sermon: www.winchester.anglican.org/bishop-philips-service-of-welcome

The photos below are screenshots showing the Rector and Churchwardens processing into the Cathedral and during the service.

The video is 3 hours long, so if you'd like to jump to significant points

- 15:22 Revd Amanda and me waiting for Jill Bath and Lizzie Baron to join us, and waving frantically when we see them!
- 32:00 Preparation for the induction of the Rt Revd Philip Mounstephen at St Lawrence Church.
- 36:14 Dean Catherine welcomes everyone
- 41:35 Dean Catherine announces that Bishop Philip is at St Lawrence making his declarations and taking his oaths of office. We join St Lawrence at this point, but unfortunately there is no sound.
- 44:53 During the ceremony, the children's choir at the Cathedral begins singing in the background.
- 1:04:15 The clergy await the Bishop outside the Cathedral
- 1:08:00 The Cathedral choir sings



- 1:12:53 The procession into the Cathedral begins



Bishop Philip preaches



2:54:37 The service ends





**St Bart's
Little Wrigglers**

A friendly group for parents/carers and children
in St Bartholomew's Church, Hyde

Everyone is welcome

- Every Wednesday in Term time
- 10am - 11:30am
- £1 per child
- Drinks and snacks

For information
'St Bartholomew, St Lawrence & St Swithun'
or www.threesaints.org.uk/families

House Groups

Normally in the Three Saints benefice we have house groups during Advent and Lent. The groups comprise about six and seven people who meet with a leader in the home of a host in order to discuss a religious topic or theme. We did not focus on the preparation in good time last Advent, but prompted by Tom Nell two groups gathered and considered readings on advent themes which had been written by contributors to *New Daylight*, published by the Bible Reading Fellowship. The readings had been prepared in 2022 and adapted for group discussion. They would be appropriate for use during any Advent, and copies of the booklet are available in the Parish Office for a small donation. I can strongly recommend them particularly the reading on John 1.1-16.

We would like to encourage house groups during Lent this year, starting in the week following Ash Wednesday (the week beginning 19th February). Application forms will be distributed soon for completion and return to the Parish Office. Do please consider joining in. They are a lovely way to get to know members of the benefice better and to share and consider topics of faith. If you have any queries please do not hesitate to contact me.

Meriel Walton

You are invited to join us for a special

FAMILY SERVICE

to celebrate

MOTHERING SUNDAY

on Sunday ~~19th~~ 10th March at 10am at St Bartholomew's Church, Hyde



in St Lawrence Parish Room, Colebrook Street

on Sunday 24th March from 12.30pm

Homemade soup, bread and cheese, fruit

All welcome - no need to book, just turn up

Donations to Christian Aid

Easter Lilies

If you would like to buy lilies in memory of loved ones departed (suggested donation £4 per name) please put names on the list in Church. For information please contact Julia Wainwright (St Bartholomew's) or Judith Chong (St Lawrence with St Swithun).

Deadline: 10th March

The list of names will be displayed in each church on Easter Day.



Electoral Roll Revision

As usual at this time of year we're revising our parish electoral rolls. Please make sure that you're on your parish's roll so that you can vote at your annual meeting!

The qualification for being on the roll is that you're baptised and *either* that you're resident in the parish *or* that you've attended church regularly for the past six months or would have done so if you could. If you're not sure which parish you live in, go online to www.achurchnearyou.com and enter your address or postcode.

There will be a notice in each church showing the formal revision period, but you needn't wait for that. After the formal revision period the names of those on the roll (but no other information) will be posted on church notice-boards for two weeks so that you can check that you're there.

If you're not sure whether you're on your parish's roll and want to be, or if you're on the roll and have moved house in the past year, or if you have any questions about the electoral roll, please see your electoral roll officer: Jeannette Archdeacon for St Bartholomew's parish or John Stanning for St Lawrence with St Swithun parish. If you don't find them in church you can contact them via the Parish Office.

Please come to your parish's Annual Meeting

Each parish has two annual meetings every April: a brief **Annual Meeting of Parishioners** whose only business is to elect the churchwardens - anyone resident in the parish, as well as anyone on the electoral roll, can vote. That meeting is followed by the **Annual Parochial Church Meeting (APCM)** when the Rector reports to the parish and we elect PCC members. Anyone may attend the APCM but only those on the electoral roll may vote.

Sunday 14th April St Bartholomew Annual Meetings
in St Bartholomew's Church after the morning service (about 11.15am)

Sunday 21st April St Lawrence with St Swithun Annual Meetings
in St Lawrence Church after the morning service (about 11.15am)

Elections: Nomination forms will be available in Church in March for the election of churchwardens, Deanery Synod representatives and PCC members. If you are interested in being nominated please talk to your churchwardens to find out more. Please return completed forms to the Parish Office.

Julia Kime has stepped down as St Lawrence's Chief Flower Arranger. The parish has been spoiled by Julia's excellent organisation in the last 10 years, and her ability to bring people together to produce beautiful flower displays. It's going to be impossible to follow by anyone. We are all very grateful to Julia for her years of service to the parish. Julia is also one of our church opener/closers, for which we are most grateful too. We all value the time that you gave to the church and especially your friendship. Enjoy your well earned rest from organising everyone. I know the flower team would still value your support and advice, especially Judith Chong who is taking over the role from you. Please don't switch off totally just yet.

Beauman Chong



Julia receiving a bouquet and gift token from Revd Amanda Goulding, Ann Lee and John Stanning.



Photos by Beauman Chong and Caroline St Leger-Davey

St Bartholomew's Posada 2023: thank you to everyone who hosted Mary, Joseph and the donkey on their long journey. Here's a glimpse of what they got up to along the way!



Off we go!



First stop – hearing a story about a donkey called Eeyore



In the next house we met a gentle giant!



The donkey made a bee-line for the Advent calendar...



Feeling the love!



Being treated to some juicy grapes to keep us going



Sharing stories by the tree



Enjoying some Christmas TV



Not wishing to criticise Revd Karen's gingerbread biscuits, but these are strange-looking donkeys!



The donkey tried making a decoration at the Little Wrigglers Christmas party



A warm welcome from a very friendly sheep!



Mmmm..mince pies at the Carols by Candlelight!



Trying out a new form of transport – much less bumpy than a donkey!



Chatting with a new friend



Future Bake Off winners!



We made it to Bethlehem – and the baby Jesus was born!

Christmas at St Bartholomew's

Thank you to everyone who helped make our Christmas season at St Bartholomew's so special. It began on Advent Sunday with the launch of the 'Posada': the figures of Mary, Joseph and the donkey set off on a journey around the parish, finding places to stay. 15 households enjoyed hosting them and telling the story. On 9th December the talented John Lofthouse performed the Charles Dickens classic 'A Christmas Carol', then in the Hyde Tavern on the 12th there was a great evening of community carol-singing. Our own carol service had a beautiful ambiance with plenty of little lights and candles, and included a small choir who sang John Rutter's charming 'Nativity Carol' and 'Ding dong, merrily on high'. Many people stayed to enjoy mulled wine and mince pies afterwards.



On Christmas Eve the church was full for the **Christingle & Crib Service**, when we welcomed the Posada figures of Mary, Joseph and the donkey to 'Bethlehem' and told the story of the birth of Jesus. We then made Christingles together, talking about how God made the world, its seasons and goodness for us, and surrounds it and us with his love, demonstrated in Jesus, the light of the world. The congregation generously gave £190 for The Children's Society.



The **Christmas Day Communion** service was also well attended and the worship was enriched by fine organ playing and beautiful seasonal flower arrangements.



Flower arrangements by Julia Wainwright, Catherine Reynolds and Doreen Jenkins. Advent ring by Emily Mantell. Photos by Karen Kousseff and Rose Burns.

... and more flowers!



Flower arrangements by Doreen Jenkins, Emily Mantell, Catherine Reynolds and Julia Wainwright. Crib scene arranged by Jane Bessey and Emily Mantell. Photos by Andy Wainwright.

Christmas flowers at St Swithun's



Flower arrangements by Jane Powlett, Veronica Cornes, Ros Nell, Fiona Innes, Susie Lyle, Judy Worth and Jane Jessop, assisted by Chris and Margaret Higgins, Joyce Corner and Elizabeth Skeet. Photos and montage by Chris Pilgrim.

Christmas flowers at St Lawrence



Crib set up by Amanda Goulding, helped by Beauman Chong. Flower arrangements by Melanie Armstrong and Julia Kime. Photos and montage by Chris Pilgrim.

St Lawrence Christmas decorations

Last year we experimented with different Christmas decorations in St Lawrence. Instead of individual flower arrangements we joined together and all made green garlands to spread around the church. We did miss the beautiful flowers, but the green felt calm and simple. It was lovely to have new people helping, all the material came from our gardens and everything could be composted, except for the plastic framework which will be reused. I hope that we will be able to do something similar this year and that everyone will feel welcome to join in.

Judith Chong



~~~~~

## What to put in the crib

It was Christmas day just passed and the morning Communion was under way at St Lawrence. One 3-year-old boy was allowed to roam, and it was lovely that his parents and grandparents let him do so. Rev'd Amanda did not object, she carried on with the service and smiled as he wandered around. During the sermon, he walked behind her, and she looked and smiled and carried on, then he stepped up to the dais and looked at, then approached, the Nativity scene displayed under the altar. I was seated near the front but could not quite see what he was doing with the stable scene. He was quiet all the time but had done something, then he returned to Mum and Dad. The service continued without further incident. I was intrigued to know what he had been doing to or at the Nativity scene. I had to wait, so as soon as we had sung the last carol, had the final blessing and all the Happy Christmases, I made my way surreptitiously up to the Nativity Scene. There it was - the wit and wisdom of this 3-year-old boy! He had added to the scene and at last I realised what had been missing from all the Nativities I had seen over my short life. It was there and I smiled and laughed. If you want to know what he had added, look on page 27. Clues: first, he is a 3-year-old boy, and secondly, the item is not listed in the Bible's versions. Think about it and, when it is disclosed, you also will smile and say, to yourself "Of course!"

*Richard Stead*



# *O* Stay Living Comfortably at home



We are a small friendly family-run Live-in Care Agency with over 23 years experience helping people continue to live happily at home.

OxleyCare offers outstanding 24hour Live-in Care and to achieve this we work closely with our clients to deliver person-centred care packages to suit everyone's individual needs and interests.

Our dedicated team provides care across Hampshire, Wiltshire and beyond.

Call us on **01980 846690**  
or visit our website to find out more  
**[www.oxleycare.co.uk](http://www.oxleycare.co.uk)**

**Long-term care · dementia care · convalescent & respite care  
· companionship · palliative care**

## OxleyCare



WARNER &  
RICHARDSON  
LLP

WARNER AND RICHARDSON LLP  
ARE INDEPENDENT SOLICITORS LOCATED  
IN THE HISTORIC CITY OF WINCHESTER.

WE HAVE A STRONG, LONG STANDING  
REPUTATION FOR PERSONAL SERVICE  
AND HIGH QUALITY LEGAL ADVICE.

FOR INFORMATION ON HOW WE CAN HELP YOU  
WITH ANY OF THESE MATTERS:-

- WILLS, PROBATE AND ESTATES
- RESIDENTIAL CONVEYANCING
- COMMERCIAL, AGRICULTURAL  
AND BUSINESS CONVEYANCING

PLEASE CONTACT US ON 01962 868366  
Visit our website:- [www.wandr.co.uk](http://www.wandr.co.uk)



**Have you suffered a  
bereavement?**

**Would it help to talk?**

**If so, please telephone:**

**07450 649679**

(24 hour answerphone)

**Our support is confidential and free. It  
is carried out by trained Bereavement  
Visitors who are supervised by  
professionally qualified counsellors.**

**[www.winchesterbereavementsupport.org.uk](http://www.winchesterbereavementsupport.org.uk)**

*Please support our advertisers – and don't forget to tell them you saw their ad in this magazine!*

# Anchor

Established. 1983

WE PRIDE OURSELVES ON EXCELLENT CUSTOMER SERVICE  
WITH A TEAM OF HIGHLY QUALIFIED AND EXPERIENCED  
ENGINEERS USING THE LATEST MODERN TECHNIQUES WHILST  
MAINTAINING TRADITIONAL PRINCIPLES

Domestic and Commercial

Heating

Plumbing

Gas

Electrical

Air Conditioning

Compressed Air

For more information or enquires

CALL US ON 01962 844 488

EMAIL: [ENQUIRIES@ANCHORMAINTENANCE.CO.UK](mailto:ENQUIRIES@ANCHORMAINTENANCE.CO.UK)

[WWW.ANCHORMAINTENANCE.CO.UK](http://WWW.ANCHORMAINTENANCE.CO.UK)





## Parish Giving Scheme raises more money for the church!

The Parish Giving Scheme (PGS) is a simple and secure way for us to give regularly to our parishes by Direct Debit, which individual parishes can't use because of the banks' stringent rules. The PGS takes care of Gift Aid, so it's all much simpler for our treasurers! You can join the PGS online, or by phone, or get a PGS form from your churchwarden.

Online via the benefice website: [www.threesaints.org.uk/support-us](http://www.threesaints.org.uk/support-us) - scroll down and you'll find links for regular giving to each parish. You can also contact the Parish Giving Scheme by phone on 0333 002 1271, or by post to 76 Kingsholm Road, Gloucester, GL1 3BD. Email for enquiries: [info@parishgiving.org.uk](mailto:info@parishgiving.org.uk) Please quote the PGS "parish code" which is 416007201 for St Bartholomew's or 416007241 for St Lawrence with St Swithun.



Please keep visiting our website [www.threesaints.org.uk](http://www.threesaints.org.uk) which is regularly updated with links to resources, spiritual and practical, for yourself, for families and for your neighbours. It gives you access to all the news on our Facebook page (you don't need a Facebook account, just click on the link).

## A second 2023 load goes to Tools With A Mission

Here are two pictures of the boot-full that was collected from parishioners and their friends towards the end of last year.

Amazing the donations of three sewing machines (which can provide a living for a whole family), a workbench and many useful workshop, carpenters and garden tools. My guess is that together we provided a living for 6 or 7 families.

Well done all donors. I shall be happy to continue collecting.

*Tom Nell*



## What to put in the crib

What did the 3-year-old boy add to the crib at St Lawrence? A dinosaur.



## Celebrating Revd Amanda's Ministry

We are hugely grateful to Revd Amanda for choosing to continue in ministry with us after her Licence as Assistant Priest came to its natural end in December: she now has the Bishop's "Permission To Officiate" for a further three years. At a wonderful celebratory lunch in the Parish Room, Revd Karen thanked Amanda for her huge contribution to our parishes since 2008.







A big thank-you to Judith and her team for a wonderful meal - see the line-up of ladies above.

Photos by Caroline St Leger-Davey





## Churches Together in Winchester Update - January 2024

May you find the New Year to be blessed and grace filled.

On the Feast of St Nicolas (6 December) we had the great joy of welcoming Rachel Jordan-Wolf to present the research about Talking Jesus. The quick summary of what she said is this: people actually

Talking  
Jesus

want to know about Jesus but we are too hesitant to share. We have been told to keep the faith - but we are keeping it a secret!

There is all you need to know from: [www.hopetogether.org.uk](http://www.hopetogether.org.uk)

This fascinating research should give us confidence to share the faith with others. One of the major influences which prompt people to want to explore faith are life events. So with Covid, political turmoil, wars in Ukraine and Israel/Palestine there are plenty of 'life events' which affect people. In a general election year even more so. Then of course there are births, marriages and deaths, moving house and changing job - plenty of occasions to be talking about Jesus over a cuppa!

In 2024 Churches Together in Winchester are doing two main things and seeking to enable many more expressions of gospel sharing. The two main things will be a Good Friday witness in the Cathedral outer close (29 March) and a special service on the evening of Pentecost (19 May). But perhaps more importantly will be our encouragement to local churches to be more confident in all sorts of expressions of gospel sharing. If you want to be involved, contact me for details.

We begin the year joyously with a pulpit swap on Sunday 21 January with preachers from different traditions coming to your church. It is just one small way of expressing our oneness in Christ.

Grace and peace to you all for Christmas and the New Year.

Revd Howard Mellor (Chair CTiW).

Other news for you:

### City Centre Chaplaincy

I'm delighted to announce that the Law Courts chaplaincy provided by the Winchester City Centre Chaplaincy has restarted after a four-year break. The courts, led by Her Honour Judge Morris, have worked with us to restart this service and since November a small team, including myself, has begun rebuilding our presence there. We're now ready to recruit more members to our team, which is where we hope you and your churches will come in!

Working in the courts is fascinating context with some unique challenges requiring a cautious, sensitive yet affirming presence. We are called, above all, simply to listen and be a calming presence to both staff and visitors at the Courts. If you think this is something God might be calling you to explore, why not join me, or another member of the team on our next shift to find out more. And if you're responsible for sharing news and opportunities in your church, it would be great if you could spread the word about this.

So please don't hesitate to contact me if you'd like more information about our work or a chance to chat over coffee. I'd be delighted to hear from you.

Grace and peace.

Revd Tim Searle - [chair@winccc.org.uk](mailto:chair@winccc.org.uk)

### Is yours a Single friendly Church?

Mike Simpson, Executive Director of Single Friendly Church, sent through this video. It encourages churches to do an audit to check how well single people are welcomed. Your church no doubt tries to welcome everyone, but this is worth watching anyway.

<https://youtu.be/6HcbPTm8DPY>

Single Friendly Church's website: [www.singlefriendlychurch.com](http://www.singlefriendlychurch.com)

## St Lawrence Parish Room

### For Hire

*Need a room for a club, society or lecture?*

St Lawrence Parish Room, in Colebrook Street, offers very competitive prices, and rental includes use of a well-stocked kitchen, toilets, chairs & tables, and a small car park.

For further information ring 01962 849434, or email [office@threesaints.org.uk](mailto:office@threesaints.org.uk)



*Now with brand-new blue carpet!*

### Benefice Biro



with stylus for tapping smartphones or tablets

(black ink)

Our biros are engraved with

*Three Saints Benefice  
Winchester*

in four colours – ONLY £3 EACH

from the Parish Office: tel. 849434 or [office@threesaints.org.uk](mailto:office@threesaints.org.uk)

### Sewing machines / laptops / iPads / iPhones for Ukrainian families

Do you have a sewing machine, a working laptop (with Window 10 and MS Office) or an iPad (any age) or a working iPhone to give to Ukrainian families in Winchester? Please contact Beauman if you can help: [beauman\\_chong@hotmail.com](mailto:beauman_chong@hotmail.com) or 01962 866488.

### Cathedral visitor passes

Winchester Cathedral provides a few visitor passes to each local parish. They are available for parishioners to borrow for free entry to the Cathedral. St Bartholomew parish's passes are kept in the vestry; to borrow St Lawrence with St Swithun parish's passes, please contact Sara at the Parish Office.

If you live in Winchester, do consider supporting our Cathedral by joining the Friends. For £25 a year (single membership) you get unlimited free access to the Cathedral as well as other benefits. See [www.winchester-cathedral.org.uk/support-us/friends](http://www.winchester-cathedral.org.uk/support-us/friends) or ring the Friends' office on 01962 857244.



## Winton WI



Join our friendly group of ladies for talks on topics including local history, horticulture, cookery and literature. Social events are also organised.

St Lawrence Parish Room on 2<sup>nd</sup> Monday of every month, 2-4pm. Refreshments available.  
Please contact: Sheila Powell - [sgpowell@hotmail.co.uk](mailto:sgpowell@hotmail.co.uk)

### Driving Miss Daisy

Driving Miss Daisy is a Companion Driver service based in central Winchester. Kate Hampton and her team have Wheelchair Accessible vehicles and can accompany you to your appointments, arrange outings, help with shopping and provide a companion service. All companions are Dementia Friends, First Aid trained, and have enhanced DBS.  
Contact Kate on 0333 014 6211 or email: [winchester@drivingmissdaisy.co.uk](mailto:winchester@drivingmissdaisy.co.uk)



## Vintage Fun

All welcome!

**Monday 12<sup>th</sup> February, 2 - 4pm at the United Church**

We meet on the second Monday of each month from 2 to 4 at the United Church in Jewry Street. Afternoons include mind games, singing, praying, guests (who will be announced on the day), some elements of craft and refreshments.

As the Anna Chaplain for the City of Winchester, I welcome you all to come.

God bless you – Pamela Gilbert

For more information please email [office@ucw.org.uk](mailto:office@ucw.org.uk)

### ADVERTISEMENT

*Please support our advertisers – and don't forget to tell them you saw their ad in this magazine!*



Available 24 hours  
Personalised Service  
Central Winchester Offices  
with off road parking

EST — **RICHARD STEEL** — 1860

**& PARTNERS**  
**FUNERAL DIRECTORS**  
Serving Winchester since 1860  
**01962 862333**  
[www.steelsfunerals.co.uk](http://www.steelsfunerals.co.uk)



Bespoke Funeral Plans  
Advance Funeral Planning  
Exclusive Funeral use of  
Chesil House, Winchester



## Shrove Tuesday Pancake Day Races

on Tuesday 13<sup>th</sup> February 2024

The Shrove Tuesday pancake races organized by Winchester Rotary in partnership with Winchester Cathedral will take place on Tuesday 13<sup>th</sup> February in the Cathedral Outer Close.

The event starts at 12.30pm with entertainment and refreshments, including pancakes, available to purchase from the Cathedral mobile catering van.

Teams of four from local businesses, charities, schools, colleges etc are invited to enter - as well as teams of family, friends... everyone is welcome! Trophies will be awarded for the fastest team and the team with the best fancy dress.

The racing starts at 1pm. Each team of four will run a relay against another team. There will be main prizes for the **fastest team** and the team wearing the **best fancy dress costumes**. The prizes will be presented at the end of the racing (around 2pm).

Come along and join the fun! The charity benefiting this year is Winchester Hospice.

For more information visit [www.winchester-rotary.org/pancake-race](http://www.winchester-rotary.org/pancake-race)



## HYDE WI



Monthly meetings for women.

Other activities include:

Book Club, Supper Club, Walking Group, Allotmenters & Craft Group.

Local community involvement/support + National & County WI events

**4<sup>th</sup> Thursday of the month, 7.45pm, Hyde Parish Hall**



@hyde\_wi



@hydewi.winchester



@hydewi



hydewi.winchester@gmail.com

www.hydewi.wordpress.com

*Next meetings on 22<sup>nd</sup> February and 28<sup>th</sup> March. Dates and venues after that t.b.a.*

**Winchester Baroque** returned to St Lawrence Church just before Christmas with the beautiful music of a baroque violin and recorder. The music was a collection of two-part pieces ranging from ancient Greek music through to the 18<sup>th</sup> century. Rudolf Balazs played the baroque violin, with Mate Szigeti playing the baroque recorder and Daen Palma Huse explaining the pieces of music.

It was a wonderful evening, though several concert-goers from outside Winchester were unable to get to the concert due to the busy Christmas Market.



*Report by Caroline St Leger-Davey*



**The Real Easter Egg** is the only Fairtrade egg to include a copy of the Easter story in the box. The stories range from simple guides to 24-page activity book versions.

The 2023 Original edition Real Easter Egg includes a new 24 page Easter story activity book with a £200 prize competition. There is also a super thick Fairtrade milk chocolate egg (150g) with a lovely creamy taste. 30% cocoa - Palm oil & plastic free.

Over its 24 pages, the story covers the final week of the life of Jesus and includes the events of Maundy Thursday, Good Friday and Easter Sunday. The book contains a prize competition worth £200.

These eggs are not available in supermarkets.

The Real Easter Egg can be bought in cases of 6 or as singles. Case price: £27 (£4.50 per egg) - Single price £4.90

See the link for the range: [www.meaningfulchocolate.co.uk/collections/real-easter-egg](http://www.meaningfulchocolate.co.uk/collections/real-easter-egg)





# WINCHESTER CATHEDRAL

## Lunchtime Concerts at Winchester Cathedral

Tuesdays at 1.15pm - 1.50pm

Brighten up your lunchtime with musical performances from local musicians, and pupils of schools and colleges from around the county.

The 2023 Lunchtime Concert Series takes place at the Cathedral, in the Lady Chapel, from **1.15pm - 1.50pm**.

General admission fees apply. Seats for the lunchtime concerts are limited and are allocated on a first come, first served basis.



### Lunchtime Concerts Programme

- |                      |                                                                                                           |
|----------------------|-----------------------------------------------------------------------------------------------------------|
| <b>6th February</b>  | Lucy Cox voice Tom Jesty piano -<br><i>songs by Piers Kennedy &amp; James Ottaway</i>                     |
| <b>13th February</b> | Renata Konyicska piano - <i>Chopin 24 Preludes op. 28</i>                                                 |
| <b>20th February</b> | Leqi Song piano - <i>works by Bach, Beethoven, Schubert &amp; Liszt</i>                                   |
| <b>27th February</b> | Matthew Nisbet lute, theorbo & baroque guitar -<br><i>works by John Dowland &amp; Robert de Visée</i>     |
| <b>5th March</b>     | Musicians from Bedales - instrumental solos & ensembles, <i>works by Beethoven, Chopin &amp; Piazzola</i> |
| <b>12th March</b>    | Laurie Sawbridge piano -<br><i>works by Bach, Schubert, Chopin &amp; Rachmaninoff</i>                     |
| <b>19th March</b>    | Cantores Episcopi - Winchester College close harmony group - <i>Music for Lent &amp; Passiontide</i>      |
| <b>26th March</b>    | Charlotte Du Cann voice Ben Salwey piano - <i>Debussy Ariettes Oubliées &amp; original compositions</i>   |

Events, artists and programmes may be subject to change.

~~~~~

Winchester College - Music Diary

Please find the full diary for this term via
www.winchestercollege.org/learning/music



Winchester Catholic History Society

Wednesdays at 6.30pm at St Peter's Parish Centre, Jewry Street, Winchester, SO23 8RY unless otherwise noted

Wednesday 21 February: Dr Simon Roffey
Hermits and Hermitages of Medieval Britain

Wednesday 20 March at Winchester College: Professor Gerard Kilroy
'Cardinal Pole'

Friday 19 April at Winchester College: The Countess of Carnarvon
'Highclere and the Pharoah'

NB Note different day and venue

Lectures last for an hour with questions afterwards
Non-members £5 at the door, students £2.50 with ID
www.winchestercatholichistorysociety.com

Hampshire County Council Future Services Consultation

Hampshire County Council has launched a public consultation to understand people's views on proposals to reduce some local services and help the Authority address a £132 million budget shortfall faced by April 2025.

The Future Services Consultation runs **until 31 March 2024**, and signals the next stage in plans to ensure it can focus support on protecting children from harm, social care for older people, and supporting adults and children with disabilities and additional needs - while meeting its legal duty to deliver a balanced budget in 2025/26.

The consultation sets out options to help lower costs in future, providing only those services that the County Council is legally required to deliver:

- **Adult social care charges:** Proposals to change the way contributions towards non-residential social care costs are calculated, so that the amount someone pays towards their non-residential care and support increases from 95% to 100% of any assessable income remaining, once standard outgoings and living costs are paid for.
- **Adult social care grant schemes:** To withdraw funding from grant programmes that assist voluntary and community organisations: the Council for Voluntary Services Infrastructure Grant, the Citizens Advice Infrastructure Grant, the Local Solutions Grant.
- **Competitive (one-off) grant schemes:** To withdraw grant schemes which provide one-off grants to the Leader's Community Grants, the Rural Communities Fund (including country shows) and the Parish and Town Council Investment Fund.
- **Hampshire Cultural Trust grant:** To reduce the amount of grant given to Hampshire Cultural Trust to manage and deliver arts and museums services.
- **Highways maintenance:** To reduce planned maintenance, incorporating larger-scale structural repairs, surface treatments on roads, and drainage improvements.
- **Highways winter service:** To review and revise the criteria used to determine which roads should be treated as part of the Priority One network.

- **Homelessness Support Services:** To stop funding services that support people who are homeless or at risk of homelessness that the County Council does not have a legal requirement to provide.
- **Household Waste Recycling Centres (HWRCs):** To provide a sustainable, cost-effective Recycling service within a reduced budget. This might involve introducing charging for discretionary services, reducing opening times or reducing the number of HWRCs.
- **Library stock:** To reduce how much is spent on new library stock.
- **Passenger transport:** To withdraw all remaining passenger transport funding that the County Council is not legally required to provide, including funding for community transport (Dial-a-Ride, Call and Go, Taxi Shares, Group Hire Services, and Wheels to Work), subsidies for bus routes not commercially viable, funding to extend the Concessionary Travel Scheme (older and disabled persons bus passes), and a review of potential impact of reductions on the school transport service and social care budgets.
- **Rural countryside parking:** To introduce car parking charges at rural countryside car parks (such as nature reserves and conservation sites) that the County Council manages.
- **School Crossing Patrols:** To decide if alternative safety measures exist or could be put in place so that SCP could be safely withdrawn or funded by other organisations.
- **Street lighting:** To reduce the brightness of streetlights further and to extend the periods that streetlights are switched off during the night (by 2 hours) - where it is considered safe and appropriate to do so.

Feedback can be provided by using the consultation Response Form, available online via the consultation webpage: www.hants.gov.uk/future-services-consultation

Responses can also be emailed directly to Hampshire County Council at insight@hants.gov.uk, or write to Freepost HAMPSHIRE (please also write PandO, IEU, FM09 on the back of the envelope).

~~~~~

**Winchester** Enabling People with Learning Disabilities **GO LD**

**Concert by the Quiristers of Winchester College**

**Saturday 16th March 2024**  
**6.30pm for 7.00 - 8.30pm**  
**St Mary's Church, Twyford SO21 1NT**

College Quiristers return after their highly successful 2023 concert at Twyford Church to sing a mixed programme of religious and popular music in aid of Winchester Go LD, Winchester Go LD enables adults with learning disabilities to live as independently as possible.

**Tickets: £18 per person**  
**(Includes a glass of wine and light refreshments)**  
**Quirister parents £12, children under 12 free**  
**Tickets available from Mrs R. Nell**  
**Email: [rosnell83@gmail.com](mailto:rosnell83@gmail.com)**

**Free parking available at the venue**

**Living life to the full.**

Winchester Go LD, The Arc, Jewry Street, Winchester, SO23 8SB.  
 T: 01962 800261 W: [winchestergold.org.uk](http://winchestergold.org.uk) E: [info@winchestergold.org.uk](mailto:info@winchestergold.org.uk)  
 Patron: Lady Portal (Louisa) MBE, DL Charity number: 1156536

[www.facebook.com/winchestergold.org.uk](http://www.facebook.com/winchestergold.org.uk)  
 W: [winchestergold.org.uk](http://winchestergold.org.uk)  
 X (formerly Twitter): [@WinchesterGo\\_LD](https://twitter.com/WinchesterGo_LD)





## Law Courts Chaplaincy needs volunteers

Since November, a small team from Winchester City Centre Chaplaincy has worked with the courts, led by Her Honour Judge Morris, to restart this service after a 4 year break. Chaplains are called above all simply to listen and be a calming presence to both staff and visitors at the Courts. If you are interested in joining the team please contact the Revd Tim Searle at [chair@winccc.org.uk](mailto:chair@winccc.org.uk) to find out more or try out a shift.

-----



### EARTH HOUR

on Saturday 23<sup>rd</sup> March 2024

at 8.30pm

Earth Hour is your time to switch off from distractions and focus on our world - joining millions across the globe. Take an hour for Earth. Every year in late March, millions of people across the globe unite to show that they care about the future of our planet, by switching off for one hour.

Take time out to reflect on what nature means to you by joining Earth Hour.

#### WHY IS IT SO IMPORTANT?

In the UK and around the world, nature - our life support system - is in crisis. We all need nature. And nature needs us to stand up for it every day. It's easy to feel overwhelmed by the scale of the challenge - to restore our natural world and prevent catastrophic climate change.

Our leaders have promised us a better future - for nature, wildlife, and all of us. We have the solutions, and now's the time for action. By 2030, our natural world could be recovering all around us.

Together we can make small, positive changes to bring our world back to life. We all have a part to play - and Earth Hour is a great place to start.

-----



The 2024 plans are shaping up very nicely for the Festival which runs from **Friday 3 - Monday 6 May** and we look forward to sharing them with you in the new year. Brochures will be sent out to supporters and available for pick up in key locations from the end of January, and all events will be visible on the website by then too.

**General booking opens Tuesday 27 February.**

Bookings will be made via the **Box Office at the Theatre Royal Winchester** again to make it much easier for those who prefer to book in person or on the phone, whilst online booking will also be available.

## Update on essential bridge replacement works at Tunbridge, Garnier Road

Winchester residents will be very frustrated to learn that work being done on the old 100 year old bridge in Garnier Road has been delayed. The road was closed in March 2023 and due to reopen in November, but the reopening has now been delayed to February 2024.

Councillor Nick Adams-King, the County Council's Executive Lead Member for Universal Services, said: "It is essential that Tunbridge is upgraded to ensure that it can be roadworthy for many decades to come. The existing bridge was an ageing structure, and its replacement is a complex engineering challenge, not least due to the presence of many hidden utility cables."

From the Hampshire County Council website:

The extension to the original estimated completion date of November is due to a number of unexpected issues including the discovery of more extensive deterioration to the existing structure, delays to utility works, as well as significant vandalism from an unauthorised encampment earlier in the year.

Despite the extension of the timetable, steps are being taken to ensure that:

- Walkers and cyclists will still be able to pass through the site
- Car parking will remain available nearby
- Access to the Handlebar café will be available at all times.

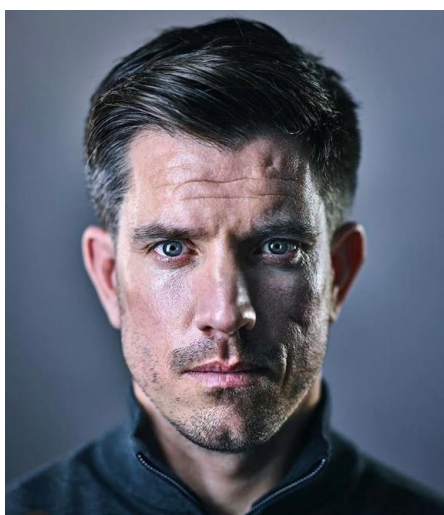
[www.hants.gov.uk/News/27092023Tunbridgeprogrammextension](http://www.hants.gov.uk/News/27092023Tunbridgeprogrammextension)

~~~~~

Join **THE ARMY FLYING MUSEUM** or online

at 7pm on Monday 26th February

Double Crossed



At the age of 23, Brian Wood was thrust into the front line in Iraq, in the infamous Battle of Danny Boy. Ambushed, he led a charge across open ground with insurgents firing at just five soldiers. On his return, he was awarded the Military Cross by Queen Elizabeth II.

But Brian's story had only just begun. Struggling to re-integrate into family life, he suffered from PTSD. Then, five years later, a letter arrived: it summoned him to give evidence at the Al-Sweady Inquiry into allegations of war crimes by British soldiers during the Iraq invasion of 2003.

Join Brian in the Museum to find out more. He'll be signing copies of his book and there will be the opportunity to buy a glass of wine or soft drink

beforehand.

If you can't be there in person on the night, buy an online pass to watch live and join in the Q&A, or watch on catch up afterwards.

Tickets £8 from <https://armyflying.com/> (there is also a back catalogue of online lectures) under Online Lecture series

“Crown and Coronation”

Immersive Light and Sound Show at Winchester Cathedral

4th - 8th March 2024



The show features stunning imagery in exquisite detail spanning across the centuries. Visitors will journey through more than 1,000 years of royal history, encompassing the reigns of some of the most famous English monarchs, including William the Conqueror, Elizabeth I, and Queen Victoria. It will also bring the spectacle, significance, and shared experience of Coronations to life, demonstrating the pivotal role of the Crown Jewels, part of the Royal Collection, within the ceremony.

When you walk past the Old Minster to enter the cathedral, you'll be walking past the very place that Edward the Confessor's Coronation took place (by the Archbishops of Canterbury and York on Easter day, 3rd April 1043). When you're inside the cathedral, watching the projections on the cathedral's historic 'Great Screen', you'll be standing in the steps of Queen Mary I (Mary Tudor) and Prince Philip II of Spain on their wedding day in 1554.

Book your tickets on the Cathedral website at www.winchester-cathedral.org.uk

~~~~~



Part II: 23 February - 9 March 2024

The second part of the Winchester Film Festival takes place in February and early March. There are award winning films that will astonish, entertain, broaden horizons, provoke debate and reflect the burning issues of our time - selected from 5 continents and over 60 countries. They will stimulate audiences with panel debates, in-depth presentations and audience Q&As.

More details and to book: [www.winchesterfilmfestival.com](http://www.winchesterfilmfestival.com)



**SAVE THE DATE: WEDNESDAY 8<sup>th</sup> MAY 2024, 10am to 4pm**  
**Upper Farm, Down Farm Lane, Headbourne Worthy, SO23 7LA**  
 Entrance £5      Ample Parking Available on site      Sorry no dogs

A great day out in a beautiful private garden. Come along for gardening inspiration and fantastic shopping with plant nurseries, artisan & homeware products, fashion accessories & delicious foods. Relax over coffee and home-made lunch in the Winchester Go LD Marquee.

Please use this QR code to visit our website for more details:

[www.winchestergold.org.uk/get-involved](http://www.winchestergold.org.uk/get-involved)

## Living life to the full.

Winchester Go LD, The Arc, Jewry Street, Winchester, SO23 8SB.  
 T: 01962 600281 W: [winchestergold.org.uk](http://winchestergold.org.uk) E: [info@winchestergold.org.uk](mailto:info@winchestergold.org.uk)  
 Patron: Lady Portal (Louisa) MBE, DL Charity number: 1156536



### Volunteer Coordinator post

*PT 16/22 Hours a Week (flexible)*

£25 - £27k (FTE) depending on experience. Hybrid working option

Passionate about helping people with learning disabilities live their lives to the full? Ace at coordinating people and all the important administration that goes on behind the scenes?

You will lead our brilliant team of volunteers. That includes recruiting, training and inspiring them to provide the very best experiences for our

members. Working as part of a close-knit team, you will play a vital role in helping our volunteers make a big difference to the lives of members through a wide range of activities and events.

Organised and efficient, you will have concise communication skills and a natural ability to rally people around. In sometimes fluid situations, you can think clearly and find the way forward. Some experience of volunteering would be great, but you will certainly be good at building relationships with a diverse range of stakeholders and able to plan and manage your own workload.

See [www.winchestergold.org.uk/volunteer-coordinator-post](http://www.winchestergold.org.uk/volunteer-coordinator-post)





**Mayfest is a celebration of music, dance and song  
on Saturday 18<sup>th</sup> May 2023**

**in venues across Winchester, including at ST LAWRENCE CHURCH**

Performances include dance 'sides', consisting of different types of Morris dance, sword dancing, clog dancing and Appalachian dancing. This will take place in the High Street, Cathedral Close and St Maurice's Covert. More details to come.



®

## **Fairtrade Fortnight**

will be from

**Monday 9 September - Sunday 22 September 2024**

(not in the Spring as before)

2024 is their 30<sup>th</sup> birthday, so they will use the occasion to highlight how 30 years of working together has made the Fairtrade Mark a leader of life-changing impact for farmers and workers across the world. More details to come.

## Computer Problems?



- PC, Mac, iPads, Phones
- Systems & Software Setups
- Virus cleaning & Security
- Tune ups & Health Checks
- Broadband, WiFi & Network
- Upgrades & Hardware
- Data Recovery
- Cracked screens replaced

Independent and Impartial Advice  
Home Visits (some evenings available)

10% labour discount over ½ Hour with  
Parish Magazine



Laptops, Macs, Phones,  
Data recovery

PC's, Laptops, Home  
setups, Viruses

**Colin: 01962 713890**    **Gerry: 01962 712674**  
**Mob: 07727 481220**    **Mob: 07900 845814**

Qualified engineer

Microsoft Certified

## **Reads of Winchester Suppliers of Sewing Machines**

We sell most makes of sewing machine and overlockers (new and reconditioned), also industrial machines. Servicing and repairs for all types of machine. Range of accessories & threads.

**First Floor, 62 High Street,  
Winchester, SO23 9BX  
01962 850950  
Open Monday to Saturday 9 to 5pm**

*To advertise in this magazine, please contact  
the Parish Office*

*phone – (01962) 849434*

*e-mail – office@threesaints.org.uk*

*post – St Lawrence Parish Office,  
Colebrook Street  
Winchester  
SO23 9LH*

Is it time for a fresh approach to your healthcare?

Prompt, holistic private GP consultations

Cutting edge Wellness & Cancer Screening

Specialist Menopause service

Subscribe from £46/month



# Winchester GP

01962 776010

www.winchestergp.com





# Gervades

*fine drycleaning and alterations*

7 Upper Brook Street, Winchester  
Tel. 01962 870750

**A**manda  
Attwood  
BEAUTY

*A Hidden Gem in the Heart of Winchester*

Established in 1984, Amanda Attwood's is one of the longest running beauty salons in Winchester.

2 Stonemasons Court  
Parchment Street  
SO23 8AT  
Winchester  
**01962 841981**

[www.amanda-attwood.co.uk](http://www.amanda-attwood.co.uk)

Quote PM1 for 10% off your first treatment

- ❖ Facials
- ❖ Waxing
- ❖ Tinting
- ❖ Manicure
- ❖ Pedicures
- ❖ Massage
- ❖ Ear Piercing
- ❖ Eyelash Extensions
- ❖ Gel Polish
- ❖ Electrolysis
- ❖ Non-Surgical Face Lift
- ❖ Microdermabrasion



**dermalogica JESSICA®** **GUINOT**  
INSTITUT • PARIS

*Please support our advertisers – and don't forget to tell them you saw their ad in this magazine!*

**Trust**  
in Godwins to deliver

**GODWINS**  
SOLICITORS LLP

12 St Thomas Street, Winchester, Hampshire SO23 9HF | 01962 841484 | [info@godwins-law.co.uk](mailto:info@godwins-law.co.uk) | [godwins-law.co.uk](http://godwins-law.co.uk)

**The Three Saints Benefice of St Bartholomew and  
St Lawrence with St Swithun-upon-Kingsgate**

**Ministry Team**

|                            |                                                                                                                                  |                                                                                |
|----------------------------|----------------------------------------------------------------------------------------------------------------------------------|--------------------------------------------------------------------------------|
| RECTOR                     | The Revd Karen Kousseff<br>St Bartholomew's House, 1 Abbey Hill Close, SO23 7AZ<br>Tel. (01962) 850956<br><i>Day off: Monday</i> | e-mail: <a href="mailto:karen@threesaints.org.uk">karen@threesaints.org.uk</a> |
| ASSISTANT PRIEST           | The Revd Amanda Goulding<br>c/o St Lawrence Parish Office, Colebrook Street, Winchester, SO23 9LH<br>Tel. (01962) 884585         | e-mail: <a href="mailto:agoulding@btinternet.com">agoulding@btinternet.com</a> |
| LICENSED LAY MINISTER      | Meriel Walton<br>Tel. (01962) 852239                                                                                             | e-mail: <a href="mailto:merielwalton@yahoo.co.uk">merielwalton@yahoo.co.uk</a> |
| CHILDREN & FAMILIES WORKER | <i>vacant</i>                                                                                                                    |                                                                                |

---

**Benefice Contacts**

|                                 |                                                                                                                                                                                          |                                           |                                                                                                                                                                                                                                |
|---------------------------------|------------------------------------------------------------------------------------------------------------------------------------------------------------------------------------------|-------------------------------------------|--------------------------------------------------------------------------------------------------------------------------------------------------------------------------------------------------------------------------------|
| SPACE IN THE CITY               | Amanda Goulding                                                                                                                                                                          | Tel. 884585                               | <a href="mailto:agoulding@btinternet.com">agoulding@btinternet.com</a>                                                                                                                                                         |
| MAGAZINE EDITORS                | Caroline St Leger-Davey<br>Jill Bath<br>John Stanning                                                                                                                                    | Tel. 865716<br>Tel. 865848<br>Tel. 867995 | <a href="mailto:caroline.stleger@gmail.com">caroline.stleger@gmail.com</a><br><a href="mailto:jillbath@btinternet.com">jillbath@btinternet.com</a><br><a href="mailto:john.stanning@yahoo.co.uk">john.stanning@yahoo.co.uk</a> |
| LITTLE WRIGGLERS                | The Revd Karen Kousseff                                                                                                                                                                  | Tel. 850956                               | <a href="mailto:karen@threesaints.org.uk">karen@threesaints.org.uk</a>                                                                                                                                                         |
| DATA PROTECTION OFFICER         | John Stanning                                                                                                                                                                            | Tel. 867995                               | <a href="mailto:dpo@threesaints.org.uk">dpo@threesaints.org.uk</a>                                                                                                                                                             |
| CHURCHES TOGETHER IN WINCHESTER | Meriel Walton                                                                                                                                                                            | Tel. 852239                               | <a href="mailto:merielwalton@yahoo.co.uk">merielwalton@yahoo.co.uk</a>                                                                                                                                                         |
| CHRISTIAN AID                   | Meriel Walton                                                                                                                                                                            | Tel. 852239                               | <a href="mailto:merielwalton@yahoo.co.uk">merielwalton@yahoo.co.uk</a>                                                                                                                                                         |
| PASTORAL MINISTRY GROUP         | Elizabeth Baron                                                                                                                                                                          | Tel. 855090                               |                                                                                                                                                                                                                                |
| HOUSE GROUP CO-ORDINATOR        | Parish Office                                                                                                                                                                            | Tel. 849434                               | <a href="mailto:office@threesaints.org.uk">office@threesaints.org.uk</a>                                                                                                                                                       |
| ENVIRONMENTAL OFFICER           | Christine Pilgrim                                                                                                                                                                        | Tel. 852226                               | <a href="mailto:deygrim@aol.com">deygrim@aol.com</a>                                                                                                                                                                           |
| WINCHESTER GOOD NEIGHBOURS      | <i>For Good Neighbourly help (part of a Hampshire-wide network)</i><br>Tel. 0800 6126 480 <a href="mailto:winchestergoodneighbours@outlook.com">winchestergoodneighbours@outlook.com</a> |                                           |                                                                                                                                                                                                                                |

---

Benefice website: [www.threesaints.org.uk](http://www.threesaints.org.uk)

The Church of England's "A Church Near You" website [www.achurchnearyou.com](http://www.achurchnearyou.com) has information for each church.

The Benefice on Facebook: [www.facebook.com/threesaintswinchester](http://www.facebook.com/threesaintswinchester) or click on the **f** icon on the Benefice website

St Bartholomew's on Facebook: [www.facebook.com/stbartholomewschurchwinchester](http://www.facebook.com/stbartholomewschurchwinchester)

St Bartholomew's on Instagram: [www.instagram.com/stbartholomewschurchwinchester](http://www.instagram.com/stbartholomewschurchwinchester) or click on the **@** icon on the Benefice website

---

**Administrator for the benefice, and St Lawrence Parish Room bookings**

Sara Gangai

St Lawrence Parish Office, Colebrook Street, Winchester, SO23 9LH

Monday afternoons, Wednesdays and Fridays

e-mail: [office@threesaints.org.uk](mailto:office@threesaints.org.uk)      Tel. 01962 849434 (24 hour answerphone)



*The benefice comprises two parishes, working together but legally distinct entities: each is a charity in its own right.*

### St Bartholomew Parish Directory

|                                           |                                                |                        |                    |              |
|-------------------------------------------|------------------------------------------------|------------------------|--------------------|--------------|
| CHURCHWARDEN                              | Malcolm Bruce*†                                | 861644                 |                    |              |
| DEPUTY CHURCHWARDENS                      | Alys Blakeway                                  | 868581                 | Lawrence Talks     | 07909 997734 |
| DEANERY SYNOD REPRESENTATIVE              | Alys Blakeway                                  | 868581                 |                    |              |
| ELECTED PCC MEMBERS                       | Duncan Boyd*                                   | 07990 531221           | Lawrence Talks     | 07909 997734 |
|                                           | Rosemary Burns                                 | 862849                 | Andrew Wainwright* | 859789       |
|                                           | Alan Gordon                                    | 868616                 |                    |              |
| HON. TREASURER                            | Duncan Boyd*                                   | 07990 531221           |                    |              |
| HON. SECRETARY TO THE PCC                 | Lis Wicks                                      |                        |                    |              |
|                                           | <i>stbpcsec@threesaints.org.uk</i>             |                        |                    |              |
| SAFEGUARDING OFFICER                      | Rosie Duffy                                    |                        |                    |              |
|                                           | <i>safeguarding.stbarts@threesaints.org.uk</i> |                        |                    |              |
| HEALTH & SAFETY OFFICER                   | Linda Jarvis                                   | 07714 755072           |                    |              |
| ELECTORAL ROLL OFFICER                    | Jeannette Archdeacon                           | 864556                 |                    |              |
| GIFT AID SECRETARY                        | Andrew Wainwright                              | 859789                 |                    |              |
| GIVING FOR LIVING @ ST BART'S COORDINATOR | Andrew Wainwright                              | 859789                 |                    |              |
| HISTORIC CHURCHES "RIDE & STRIDE"         | Andrew & Julia Wainwright                      | 859789 or 07813 339847 |                    |              |

\* *Members of the Standing & Finance Committee*

† *Vice-Chair of the PCC*

*The Parochial Church Council (PCC) comprises the ministers licensed to the benefice, the elected Churchwarden and the elected Deanery Synod representative, all of whom are 'ex-officio' members of the PCC, and the directly-elected members listed above.*

#### Postcodes for our sites

Please send all post to the Parish Office for the benefice:  
St Lawrence Parish Office, Colebrook Street, Winchester, SO23 9LH

Postcodes for use with satnavs - *please don't send post to these sites:*

- St Bartholomew Church: King Alfred Place, SO23 7DF
- St Lawrence Church: The Square, SO23 9EX
- St Swithun-upon-Kingsgate Church: St Swithun Street, SO23 9JP
- Hyde Parish Hall (close to St Bartholomew Church):  
55 Hyde Street, SO23 7DY
- St Lawrence Parish Room: Colebrook Street, SO23 9LH  
(in front of the Parish Office)

On smartphone mapping apps, you'll get better guidance by entering the name, e.g. "St Bartholomew, Winchester", rather than the postcode.

## St Lawrence with St Swithun Parish Directory

|                               |                    |            |                |            |
|-------------------------------|--------------------|------------|----------------|------------|
| CHURCHWARDENS                 | Beuman Chong*†     | Tel 866488 | John Stanning* | Tel 867995 |
| DEANERY SYNOD REPRESENTATIVES | Nick Goulding*     | Tel 884585 | Tom Nell       | Tel 861448 |
| ELECTED PCC MEMBERS           | Elizabeth Baron    | Tel 855090 | Louise Kerr    | Tel 862317 |
|                               | Anna Bennetts      | Tel 853234 | Clare Kilroy   | Tel 862317 |
|                               | Geoffrey Bennetts* | Tel 853234 | Ros Nell       | Tel 861448 |
|                               | Chris Higgins      | Tel 855595 | Richard Stead  | Tel 865556 |

|                           |                 |                                      |
|---------------------------|-----------------|--------------------------------------|
| HON. SECRETARY TO THE PCC | Lis Wicks       | <i>stlspccsec@threesaints.org.uk</i> |
| HON. TREASURER            | Nick Goulding*  | Tel 884585                           |
| HON. ASSISTANT TREASURER  | Bethany Milward | Tel 854558                           |

\* Members of the Standing & Finance Committee

† Vice-Chair of the PCC

*The Parochial Church Council (PCC) comprises the ministers licensed to the benefice, the elected Churchwardens and the elected Deanery Synod representatives, all of whom are 'ex-officio' members of the PCC, and the directly-elected members listed above.*

|                                               |                                 |                                             |                 |            |
|-----------------------------------------------|---------------------------------|---------------------------------------------|-----------------|------------|
| LEGACY AND STEWARDSHIP OFFICERS               | Beuman Chong                    | Tel 866488                                  |                 |            |
|                                               | <i>beuman_chong@hotmail.com</i> |                                             |                 |            |
|                                               | Christine Pilgrim               | Tel 852226                                  |                 |            |
|                                               |                                 | <i>deygrim@aol.com</i>                      |                 |            |
| GIFT AID SECRETARY                            | Tom Nell                        | Tel 861448                                  |                 |            |
| SAFEGUARDING OFFICER                          | Kathryn Whelan                  | Tel 856040                                  |                 |            |
|                                               |                                 | <i>safeguarding.stls@threesaints.org.uk</i> |                 |            |
| ELECTORAL ROLL OFFICER                        | John Stanning                   | Tel 867995                                  |                 |            |
| HEALTH & SAFETY OFFICER                       | Beuman Chong                    | Tel 866488                                  |                 |            |
| SOCIAL EVENTS COMMITTEE                       | <i>vacant</i>                   |                                             |                 |            |
| PARISH ROOM COMMITTEE                         | Louise Kerr                     | Tel 862317                                  |                 |            |
| ST LAWRENCE BROWNIES & GUIDES                 | Elizabeth Baron                 | Tel 855090                                  |                 |            |
| HISTORIC CHURCHES "RIDE & STRIDE"             | Louise Kerr & Clare Kilroy      | Tel 862317                                  |                 |            |
| CHARITABLE GIVING AND OVERSEAS GROUP CONVENER | Meriel Walton                   | Tel 852239                                  |                 |            |
| ORGANISTS                                     | <i>St Lawrence</i>              | Luke Fowler & Christopher Tolley            |                 |            |
| FLOWERS                                       | {                               | <i>St Lawrence</i>                          | Judith Chong    | Tel 866488 |
|                                               |                                 | <i>St Swithun</i>                           | Jane Powlett    | Tel 865345 |
|                                               |                                 |                                             | Veronica Cornes | Tel 852027 |

### Useful phone numbers

|                                                      |              |                                                        |               |
|------------------------------------------------------|--------------|--------------------------------------------------------|---------------|
| Out-of-hours medical help                            | 111          | Police non-urgent                                      | 101           |
| St Paul's medical practice                           | 01962 853599 | To report a BT landline fault                          | 0800 800 151  |
| Friarsgate medical practice                          | 01962 871730 | Winchester City Council offices                        | 01962 840222  |
| St Clement's medical practice                        | 01962 852211 | Bus station                                            | 0345 121 0190 |
| Royal Hampshire County Hospital                      | 01962 863535 | National Rail enquiries                                | 0800 5282 100 |
| Samaritans 24-hr helpline                            | 116123       | Domestic abuse 24-hr helpline                          | 0808 2000 247 |
| Trinity Drop-in Day Centre, Bradbury House, Durngate | 01962 842827 | In need of a bed? WCC housing office, Colebrook Street | 01962 840222  |





The Three Saints Benefice of St Bartholomew and  
St Lawrence with St Swithun-upon-Kingsgate, Winchester

## SERVICES IN FEBRUARY 2024

|         |                                          |                          |                            |                |
|---------|------------------------------------------|--------------------------|----------------------------|----------------|
| 2       | Friday                                   | 10.00am                  | Coffee Morning .....       | St Lawrence    |
| 4       | <b>The Second Sunday<br/>before Lent</b> | 10.00am                  | All Together Service ..... | St Bartholomew |
| 10.00am |                                          | Holy Communion .....     | St Lawrence                |                |
| 6.00pm  |                                          | Evensong .....           | St Swithun                 |                |
| 7       | Wednesday                                | 10.30am                  | BCP Holy Communion .....   | St Lawrence    |
| 11      | <b>The Sunday before<br/>Lent</b>        | 10.00am                  | Holy Communion .....       | St Bartholomew |
| 10.00am |                                          | Morning Worship .....    | St Lawrence                |                |
| 6.00pm  |                                          | Holy Communion .....     | St Swithun                 |                |
| 14      | <b>Ash Wednesday</b>                     | 10.30am                  | Holy Communion w/ ashing   | St Lawrence    |
| 11.30am |                                          | Holy Communion w/ ashing | St Bartholomew             |                |
| 7.00pm  |                                          | Holy Communion w/ ashing | St Swithun                 |                |
| 18      | <b>The First Sunday of<br/>Lent</b>      | 10.00am                  | Morning Worship .....      | St Bartholomew |
| 10.00am |                                          | Holy Communion .....     | St Lawrence                |                |
| 6.00pm  |                                          | Evensong .....           | St Swithun                 |                |
| 20      | Tuesday                                  | 10.30am                  | Coffee Morning .....       | St Bartholomew |
| 25      | <b>The Second Sunday<br/>of Lent</b>     | 10.00am                  | Holy Communion .....       | St Bartholomew |
| 10.00am |                                          | Morning Worship .....    | St Lawrence                |                |
| 6.00pm  |                                          | Evensong .....           | St Swithun                 |                |

## MARCH

|         |                                     |                             |                            |                |
|---------|-------------------------------------|-----------------------------|----------------------------|----------------|
| 1       | Friday                              | 10.00am                     | Coffee Morning .....       | St Lawrence    |
| 3       | <b>The Third Sunday of<br/>Lent</b> | 10.00am                     | All Together Service ..... | St Bartholomew |
| 10.00am |                                     | Holy Communion .....        | St Lawrence                |                |
| 12 noon |                                     | Baptism of Ned Giblin ..... | St Bartholomew             |                |
| 6.00pm  |                                     | Evensong .....              | St Swithun                 |                |

Services at St Lawrence and St Swithun churches are normally 'live-streamed' on Zoom: please see [www.threesaints.org.uk/services](http://www.threesaints.org.uk/services) for details.